



Centre Interuniversitaire sur le Risque,  
les Politiques Économiques et l'Emploi

Cahier de recherche/Working Paper **10-42**

## **A Reduced Form Model of Default Spreads with Markov-Switching Macroeconomic Factors**

Georges Dionne  
Geneviève Gauthier  
Khemais Hammami  
Mathieu Maurice  
Jean-Guy Simonato

Novembre/November 2010

---

**Dionne** : HEC Montréal and CIRPÉE

**Gauthier** : HEC Montréal

**Hammami** : Caisse de Dépôt et Placement du Québec

**Maurice** : Caisse de Dépôt et Placement du Québec

**Simonato** : Corresponding author. HEC Montréal and CIRPÉE

[jean-guy.simonato@hec.ca](mailto:jean-guy.simonato@hec.ca) ; Phone: 514 340-6807

The authors acknowledge the financial support from the National Science and Engineering Research Council of Canada (NSERC), the Fonds québécois de recherche sur la nature et les technologies (FQRNT), the Social Sciences and Humanities Research Council of Canada (SSHRC), the Center for research on E-finance (CREF), the Canada Research Chair in Risk Management, and the Institut de Finance Mathématique de Montréal. Preliminary versions were presented at the 2006 North American Winter Meeting of the Econometric Society, the 2006 European Finance Association conference, the 18<sup>th</sup> Annual Derivatives Securities and Risk Management Conference and the 2010 C.R.E.D.I.T. Risk Conference in Venesia. The authors thank D. Amaya, J.C. Bouvrette, M. Bruche, K. Hyogo, C. Okou, S. Schaefer and a referee for their comments on earlier versions of this paper.

**Abstract:**

An important research area of the corporate yield spread literature seeks to measure the proportion of the spread that can be explained by factors such as the possibility of default, liquidity, tax differentials and market risk. We contribute to this literature by assessing the ability of observed macroeconomic factors and the possibility of changes in regime to explain the proportion of yield spreads caused by the risk of default in the context of a reduced form model. For this purpose, we extend the Markov Switching risk-free term structure model of Bansal and Zhou (2002) to the corporate bond setting and develop recursive formulas for default probabilities, risk-free and risky zero-coupon bond yields as well as credit default swap premia. The model is calibrated with consumption, inflation, risk-free yields and default data for Aa, A and Baa bonds from the 1987-2008 period. We find that our macroeconomic factors are linked with two out of three sharp increases in the spreads during this sample period, indicating that the variations can be related to macroeconomic undiversifiable risk. The estimated default spreads can explain almost half of the 10 years to maturity industrial Baa zero-coupon yields in some regime. Much smaller proportions are found for Aa and A bonds with numbers around 10%. The proportions of default estimated with credit default swaps are higher, in many cases doubling those found with corporate yield spreads.

**Keywords:** Credit spread, default spread, Markov switching, macroeconomic factors, reduced form model of default, random subjective discount factor, credit default swap, CDS

**JEL Classification:** G12, G13

# 1 Introduction

Several empirical studies have recently been performed on corporate yield spreads, measured as the difference between the corporate and treasury yield to maturity. These studies attempt to explain some of the observed features of corporate spreads through time. In this article we synthesize two research directions recently explored by this literature. We investigate whether a reduced form model with observed macroeconomic risk factors following a Markov-switching process can help explain the spread behavior through time. The model and the empirical study proposed here can also be seen as an extension of the Elton et al. (2001) model to a risk averse setting. In Elton et al. (2001), an assumption of risk neutrality was needed to justify the use of observed default probabilities in a bond pricing model specified under the risk neutral measure. Although risk premia were estimated empirically with Fama-French factors, risk aversion was not explicitly incorporated in their theoretical modeling approach. The model developed here is entirely specified under the objective measure in a risk averse setting, avoiding the need for a risk neutrality assumption.

The motivation for examining macroeconomic fundamentals as drivers of the spread behavior comes from the link between interest rates and output from firms and the macroeconomy. These variables, which should influence yield spreads, fluctuate over the business cycle. It should thus be anticipated that macroeconomic fundamentals play a role in explaining the spread behavior through time. Recently, some attempts have been made to associate macroeconomic activity to the spreads in the context of structural models. For example, Pesaran et al. (2006) examine an econometric model linking credit risk and macroeconomic variables in a Merton-type structural model. Chen et al. (2009) explore how a structural model using pricing kernels that are successful in solving the equity premium puzzle performs in explaining the spread. David (2008) looks at how investors' learning from inflation helps to generate realistic credit spread levels. With the exception of Amato and Luisi (2006), where a model of credit spread with both latent and observed macro variables is examined, little research has been done in the context of reduced form models. Further work on the reduced form type models and the macroeconomy is thus an interesting addition to the literature because these models often require fewer inputs in the calibration stage.

Another distinctive feature of the model examined here is the Markov-switching environment.

The motivation for examining the influence of macroeconomic variables in such a framework comes from empirical evidence suggesting that switching regimes are better descriptions of these variables and risk-free interest behavior than single regime models. See for example Evans (2003), Ang, Bekaert and Wei (2008), Bansal and Zhou (2002) and Dai, Singleton and Yang (2007). Because the possibility of changes in regime might influence macroeconomic factors and risk-free interest rates, it is only natural to assume that this might also affect corporate yield spreads. Davies (2008) finds that this is indeed the case and that a Markov-switching model summarizes some properties of spread times series well. Cenesizoglu and Essid (2010) also provide evidences of switching behavior while examining the effect of monetary policy on credit spreads.

To introduce macroeconomic factors and the possibility of changes in regime in a reduced form spread model, we extend the switching regime risk-free term structure model of Bansal and Zhou (2002) to the risky corporate setting. Starting from the first order condition of the intertemporal consumption problem with a power utility function and a random subjective discount factor, we assume that consumption and inflation dynamics are governed by two independent Markov chains. Using a log linear approximation we derive closed form recursive formulas for risk-free and risky bond yields, default probabilities, and credit default swap premia, which are all functions of the growth rates of our two observed factors. We also consider recovery rates varying with the states of consumption growth. We then measure the default spread generated by this approach by calibrating the model with financial data.

Our calibration approach proceeds without yield spread data. Corporate yield spread levels might be influenced by several factors such as the possibility of default, liquidity, market risk or taxes. Because our goal is to measure the proportion of the spread brought by the possibility of default, our model accounts for this dimension only, avoiding the potential misspecifications of other factors. Thus, fitting the model developed here with spread data could produce biased results because of the omitted factors. We therefore rely on an indirect strategy that uses aggregate consumption growth, inflation, risk-free yield curves and default data to obtain the parameter values required to measure the proportion of the yield spreads which can be explained by the possibility of default alone.

This calibration approach proceeds in three steps. First, we estimate the Markov-switching

parameters with aggregate consumption and inflation data. Using the parameters obtained in the first step, we then extract utility parameters from the term structure of risk-free rates. In a third step, with the parameter values obtained in the preceding steps, we calibrate the parameters linking our theoretical default probabilities with the macroeconomic risk factors to match the observed default probabilities obtained from default data. The default yield spreads implied by our model can then be computed and analyzed with an assumed structure for the recovery rates.

Our results show that the default spread exhibit different sensitivities to consumption and inflation depending on the possible regimes. We find that the model can reproduce some key properties of observed spreads, such as the sharp increases observed in two out of three recessions present in our sample period. These two sharp increases are associated with a low consumption growth and high inflation uncertainty regime identified by our Markov-switching process. This result is interesting because it indicates that, in some regime, the spread level is sensitive to a macroeconomic market wide undiversifiable risk. Such a result is supported by recent studies such as Farnsworth and Li (2007), who provide evidence of systematic factors associated with default risk. Our results also indicate that sharp increases in spreads are not necessarily linked to macroeconomic variables. For example, the sharp increase in 2001 is not captured by our model because this period is found to be in a high consumption growth and low inflation risk regime. This result is in line with the literature on forecasting models where the consumption indicator of economic activity was found to be a poor predictor of the 2001 recession (Evans et al 2002; Stock and Watson, 2003). We also find that risk aversion does not greatly influence the proportion of the spread caused by the risk of default. This result can, in part, be attributed to the low volatility of consumption growth and inflation during the studied period which are used as the sole factors in the model. We obtain estimates of default spread proportions varying through the different regimes. For example, these proportions for 10 years to maturity Baa yields range from 28% to 43%, while they are around 10% for Aa and A yields. (Table 7). The proportions of default are also estimated with credit default swaps, which are instruments less influenced by liquidity or tax considerations. With these, much higher proportions are found with numbers around 21%, 35% and 76% for Aa, A and Baa.

Section 2 presents our theoretical models and formulas for the risk-free zero-coupon bonds, the risky zero-coupon bonds and the default probabilities. Section 3 presents our estimation results

and calibration procedures. Section 3.7 analyzes the estimated default spreads for industrial Aa, A and Baa bonds. Section 4 extends the analysis to credit default swaps. Section 5 concludes the paper.

## 2 Model

The model developed here starts from the well known first-order condition of the intertemporal consumption problem as described in, for example, Cochrane (2005). Because we attempt to model nominal bond prices, we account for the future growth rates of the price level and real consumption. We assume that the future evolution of these variables is well described by a Markov-switching process.

Let  $C_t$  denote the real personal consumption expenditures per capita at time  $t$ , and  $\Pi_t$  the ratio of nominal over real consumptions (consumption price index) at time  $t$  with  $t \in \mathcal{N}$ . Here, the time variable is expressed in quarters and the continuously compounded quarterly growth rates are defined as  $c_t = \ln C_t - \ln C_{t-1}$  and  $\pi_t = \ln \Pi_t - \ln \Pi_{t-1}$ . We assume that  $c_t$  and  $\pi_t$  follow an autoregressive model with switching regimes

$$c_t = a_{s_t^c}^c + b_{s_t^c}^c c_{t-1} + e_t^c \quad (1a)$$

$$\pi_t = a_{s_t^\pi}^\pi + b_{s_t^\pi}^\pi \pi_{t-1} + e_t^\pi \quad (1b)$$

where  $s_t^c \in \{1, 2\}$  is the state of consumption at time  $t$  and  $s_t^\pi \in \{1, 2\}$  is the state of inflation at time  $t$ . The error terms  $e_t^c$  and  $e_t^\pi$  are i.i.d. Normal noises with zero mean, standard deviations  $\sigma_{s_t^c}^c$  and  $\sigma_{s_t^\pi}^\pi$  and covariance  $\rho_{s_t} \sigma_{s_t^c}^c \sigma_{s_t^\pi}^\pi$  with  $s_t = \{s_t^c, s_t^\pi\}$  i.e.  $s_t \in \{(1, 1), (1, 2), (2, 1), (2, 2)\}$ . The states of consumption growth and inflation are assumed to follow two independent Markov chains with transition matrices

$$\phi^c = \begin{pmatrix} \phi_{11}^c & 1 - \phi_{11}^c \\ 1 - \phi_{22}^c & \phi_{22}^c \end{pmatrix}, \quad \phi^\pi = \begin{pmatrix} \phi_{11}^\pi & 1 - \phi_{11}^\pi \\ 1 - \phi_{22}^\pi & \phi_{22}^\pi \end{pmatrix}.$$

These Markov chains are also assumed to be independent of past values of  $c$  and  $\pi$ .

Define the  $\sigma$ -field  $\mathcal{G}_t = \sigma(C_u, \Pi_u, s_u : u \in \{0, 1, \dots, t\})$ . It may be interpreted as the information available at time  $t$  if one observes the evolution of consumption growth, inflation, and the state of consumption and inflation up to time  $t$ .

To obtain our pricing equations, we assume a standard time-separable power utility function for the investor with a subjective discount factor coefficient which depends on the future states of the Markov chain. We are thus allowing the subjective discount factor parameter to be different in the different possible regimes<sup>1</sup>. As discussed in Cochrane (2005), the standard power utility framework with lognormal consumption does not easily reproduce key features of observed risk-free term structures such as a positive average slope. This parametrization for the time-preference coefficient provides an additional flexibility that will help generate average yield curves with a positive slope. Appendix A shows that, from the first order condition of the intertemporal consumption problem, the time  $t$  value of a security without default risk worth  $X_{t+1}$  at time  $t + 1$  is given by

$$\mathbb{E}_t \left[ \beta_{s_{t+1}} \left( \frac{C_{t+1}}{C_t} \right)^{-\gamma} \frac{\Pi_t}{\Pi_{t+1}} X_{t+1} \right] = \mathbb{E}_t [M_{t,t+1} X_{t+1}] \quad (2)$$

where

$$M_{t,t+1} = \exp (\ln \beta_{s_{t+1}} - \gamma c_{t+1} - \pi_{t+1}) \quad (3)$$

is the nominal discount factor or the default-free pricing kernel for the time period  $]t, t + 1]$ ,  $\beta_{s_{t+1}}$  is the subjective discount factor in state  $s_{t+1}$  and  $\gamma$  the risk aversion coefficient.  $\mathbb{E}_t [\bullet]$  is a shorthand notation for  $\mathbb{E} [\bullet | \mathcal{G}_t]$ , the conditional expectation with respect to available information at time  $t$ . Equation (2) thus proposes a pricing kernel for default-free securities which is a function of the consumption, inflation and Markov chain processes. The pricing kernel accounts for regime shift uncertainty given that parameters of the consumption and inflation at  $t + 1$  are function of the state for the Markov chain in  $t + 1$ . As mentioned above, we also assume that this uncertainty affects the subjective discount factor  $\beta$  that also depends on the state of the Markov chain at  $t + 1$ .

## 2.1 Risk free zero-coupon bond

An exact formula for the time  $t$  value of a default-risk-free zero-coupon bond paying one dollar at time  $T$  can be obtained using the framework described above. However, such a solution is not practical. For example, with quarterly time steps, the value of a zero-coupon bond maturing in

---

<sup>1</sup>Such preferences are coherent with the general framework proposed in Higashi et al. (2009). In their model, a decision maker believes that his discount factors change randomly over time according to i.i.d. shocks. Our formulation assumes a Markov chain. Apart from that, our model is consistent with their formulation. See also Salanié and Treich (2006).

40 quarters would roughly contain  $4^{40}$  terms to compute. This would make the numerical implementation of the exact solution unmanageable. For this reason, we instead rely on an analytical approximation developed in Bansal and Zhou (2002) for the price of a risk-free zero-coupon bond with  $n$  periods to maturity:

$$P(t, n, s_t) = \exp(A_{n,s_t}^p - B_{n,s_t}^{p,c} c_t - B_{n,s_t}^{p,\pi} \pi_t) \quad (4)$$

where  $s_t = \{s_t^c, s_t^\pi\}$  and expressions for  $A_{n,s_t}^p$ ,  $B_{n,s_t}^{p,c}$ , and  $B_{n,s_t}^{p,\pi}$  are given in Appendix B. The pricing formula is a function of our observed factors and the states of the Markov chains. Sensitivities to the factors are given by the  $B$  functions which are determined recursively using backward induction and the terminal condition  $A_{0,s_T}^p = B_{0,s_T}^{p,c} = B_{0,s_T}^{p,\pi} = 0$ . These expressions are functions of the Markov-switching parameters and the actual states of consumption and inflation  $s_t^c$  and  $s_t^\pi$ . At each point in time, four different bond prices can thus be computed because four different states are possible. Because the state of the economy is unknown at a particular point in time, we will define the theoretical zero-coupon bond price as the expected bond price, with the expectation computed over the possible states of the Markov chain whose probability can be conveniently estimated. Section 3.4 provides further details about this procedure. Factor sensitivities are also functions of the time to maturity,  $n = T - t$ , and the utility function parameters.

Although the formula in Appendix B is complex, it is possible to get some intuition by looking at the one-period case, rewritten in terms of an annualized yield to maturity:

$$y_p(t, 1, s_t) = 4 \sum_{i=1}^2 \sum_{j=1}^2 \phi_{s_t^c, i}^c \phi_{s_t^\pi, j}^\pi \left[ \begin{array}{l} -\ln \beta_{i,j} + \gamma (a_i^c + b_i^c c_t) + (a_j^\pi + b_j^\pi \pi_t) \\ -\frac{1}{2} (\sigma_j^\pi)^2 - \frac{1}{2} \gamma^2 (\sigma_i^c)^2 - \gamma \rho_{i,j} \sigma_i^c \sigma_j^\pi \end{array} \right]$$

where the term inside brackets is the expression for the yield to maturity, in state  $i, j$ , of a one-period risk-free bond within the power utility lognormal framework. The one-period bond yield in state  $s_t$  is the conditional expected value of the bond yields in the different possible states where the  $\phi$ 's are the transition probabilities. The various terms forming the bond yield in state  $i, j$  are then interpreted the usual way.

The first term of the expression within brackets is a function of the subjective discount factor. A smaller subjective discount factor (more impatient investor) is associated with higher yields because the impatient investor prefers consumption to saving. The second term,  $\gamma (a_i^c + b_i^c c_t)$ ,



is the risk aversion parameter multiplied by the conditional expected growth of consumption in state  $i, j$ . Given positive  $a_i^c$  and  $b_i^c$ , higher values of these coefficients will lead to higher expected consumption growth and higher yields. The risk aversion parameter  $\gamma > 0$  makes the yield more or less sensitive to the expected consumption growth rate. The sum of the third and fourth term,  $(a_j^\pi + b_j^\pi \pi_t) - \frac{1}{2} (\sigma_j^\pi)^2$ , is the portion of yield rewarding the investor for the expected loss in real purchasing power on the nominal one dollar bond payoff at maturity and where the variance of inflation appears because of the convexity of the bond pricing function. The fifth term,  $\frac{1}{2} \gamma^2 (\sigma_j^c)^2$ , is the precautionary savings effect brought by the volatility of consumption. An increase in the volatility of consumption brings more extreme low and high paths of future consumption. Because investors worry more about the low consumption states than they are pleased by the high ones, a demand for savings is created that drives down the yield on the bond. The last term,  $\gamma \rho_{i,j} \sigma_i^c \sigma_j^\pi$ , is the inflation risk premium. A negative correlation will obtain a positive risk premia because inflation decreases the real nominal bond payoff in states where the investor needs it the most. For example, a future low consumption state would likely be associated with a high inflation path and low real value for the nominal payoff.

## 2.2 Risky zero-coupon bond and default spread

We consider a risky zero-coupon bond paying one dollar at  $T$  if it has not defaulted before. In case of default, the bondholder receives at the default time  $\tau$ , a fraction of its market value if it had not defaulted. In this well studied context (see Duffie and Singleton 1999), the time  $t$  value of the survived risky zero-coupon bond is

$$\tilde{V}(t, n, s_t) = E_t \left[ M_{t,t+1} (1 - L_{s_{t+1}} h_{t+1}) \tilde{V}(t+1, n-1, s_{t+1}) \right]$$

where  $L_{s_{t+1}}$  is the loss given default (LGD), defined as one minus the recovery rate and assumed to depend on the states of the Markov chain. Here,  $h_{t+1} = \Pr_{\mathcal{G}_{t+1}}[\tau = t+1 \mid \tau > t]$  represents the conditional probability that the default arises within the next period of time knowing that the firm as survived at time  $t$  and having the information available at time  $t+1$ . Because default probabilities are usually small, it is reasonable to use a first order Taylor expansion to approximate

$1 - L_{s_{t+1}} h_{t+1}$  by  $\exp(-L_{s_{t+1}} h_{t+1})$ . Hence

$$\tilde{V}(t, n, s_t) \cong E_t \left[ M_{t,t+1} \exp(-L_{s_{t+1}} h_{t+1}) \tilde{V}(t+1, n-1, s_{t+1}) \right]. \quad (5)$$

where  $M_{t,t+1} \exp(-L_{s_{t+1}} h_{t+1})$  is our pricing kernel for the risky zero-coupon bond. We also assume that the conditional default probability  $h_{t+1}$  is approximated by an affine function of  $c_{t+1}$  and  $\pi_{t+1}$ , that is,

$$h_{t+1} \cong \alpha_{s_{t+1}} + \alpha_{s_{t+1}}^c c_{t+1} + \alpha_{s_{t+1}}^\pi \pi_{t+1} \quad (6)$$

where  $\alpha_{s_{t+1}}$ ,  $\alpha_{s_{t+1}}^c$  and  $\alpha_{s_{t+1}}^\pi$  are parameters. Note that the specification (6) can produce negative probabilities as well as probabilities larger than one. Using these assumptions and those required by the approach of Bansal and Zhou (2002), Appendix C develops the following analytical approximation for the prices of risky zero-coupon bonds :

$$V(t, n, s_t) = \exp(A_{n,s_t}^v - B_{n,s_t}^{v,c} c_t - B_{n,s_t}^{v,\pi} \pi_t). \quad (7)$$

As shown in Appendix C, the coefficients  $A_{n,s_t}^v$ ,  $B_{n,s_t}^{v,c}$  and  $B_{n,s_t}^{v,\pi}$  are obtained recursively starting with  $A_{0,s_T}^v = B_{0,s_T}^{v,c} = B_{0,s_T}^{v,\pi} = 0$ . The resulting pricing formula is very similar to the risk-free case developed earlier. It is a function of the current values of our two observed factors with the loadings given by the  $B$  functions. These quantities are functions of the Markov-switching model parameters, the actual states of consumption and inflation  $s_t^c$  and  $s_t^\pi$ , the utility function parameter values and the time to maturity. Unlike the risk-free case, however, we find the additional  $L_{i,j} \alpha_{i,j}$ ,  $L_{i,j} \alpha_{i,j}^c$  and  $L_{i,j} \alpha_{i,j}^\pi$  terms appearing because of the possibility of default.

Using the above analytical approximation and the earlier approximation for the risk-free yield, an expression for the annualized default spread, defined as the difference between the risky yield to maturity and the risk-free yield to maturity, is given by:

$$DS(t, n, s_t) = \frac{A_{n,s_t}^p - A_{n,s_t}^v + (B_{n,s_t}^{v,c} - B_{n,s_t}^{p,c}) c_t + (B_{n,s_t}^{v,\pi} - B_{n,s_t}^{p,\pi}) \pi_t}{n/4}. \quad (8)$$

Again, to get some intuition about the role of the different parameters on the spread, it is interesting

to look at the one period case :

$$DS(t, 1, s_t) = 4 \sum_{i=1}^2 \sum_{j=1}^2 \phi_{s_t^c, i}^c \phi_{s_t^\pi, j}^\pi \quad (9)$$

$$\times L_{i,j} \left[ \begin{array}{l} \alpha_{i,j} + \alpha_{i,j}^c (a_i^c + b_i^c c_t) + \alpha_{i,j}^\pi (a_j^\pi + b_j^\pi \pi_t) \\ -\frac{1}{2} L_{i,j} \left( (\alpha_{i,j}^c \sigma_i^c)^2 + (\alpha_{i,j}^\pi \sigma_j^\pi)^2 + 2\alpha_{i,j}^\pi \alpha_{i,j}^c \rho_{i,j} \sigma_i^c \sigma_j^\pi \right) \\ -\alpha_{i,j}^\pi (\sigma_j^\pi)^2 - \gamma \left( \alpha_{i,j}^c (\sigma_i^c)^2 + (\alpha_{i,j}^\pi + \alpha_{i,j}^c) \rho_{i,j} \sigma_i^c \sigma_j^\pi \right) \end{array} \right]$$

where the term inside brackets is the expression for the default spread, in state  $i, j$ , for a one period risky bond. The default spread in state  $s_t$  is the conditional expected value of the bond yield spreads in the different possible states next period.

The first line of the term within brackets can be interpreted as one of the portions forming the expected loss next period in state  $i, j$ . In the context of a one period bond,  $L_{i,j}$  represents the loss given default. This quantity is multiplied by the conditional expected default probability in state  $i, j$  that is  $\alpha_{i,j} + \alpha_{i,j}^c (a_i^c + b_i^c c_t) + \alpha_{i,j}^\pi (a_j^\pi + b_j^\pi \pi_t)$ . The signs of the  $\alpha_{i,j}$ ,  $\alpha_{i,j}^c$  and  $\alpha_{i,j}^\pi$  will determine the influence of consumption and inflation on this portion of the spread. The second and third lines are the additional impacts of potential losses brought by the convexity of our recovery factor model. Again, the sign of these terms will depend on the signs of the  $\alpha$ 's. For example, the effect of a change in consumption volatility is not clear because it depends on the magnitude and signs of the  $\alpha$ 's and the correlation. Hence, given  $\rho_{i,j} > 0$  with a negative and large  $\alpha_{i,j}^c$  (relative to the  $\alpha_{i,j}^\pi$ ), an increase in consumption volatility will increase the spread. Finally, the risk aversion parameter interacts only with the squared volatilities and covariance of the factors. Hence, risk aversion is a second order effect whose magnitude will be determined by the relative importance of the volatilities, the covariance term, and the magnitudes and signs of the  $\alpha_{i,j}^c$  and  $\alpha_{i,j}^\pi$  parameters. In the context of this model, the proportion caused by risk aversion can be conveniently assessed. One can first compute the portion of the spread caused by the actuarial loss. This is the default spread with which a risk neutral investor would be satisfied. This quantity, that we label the *default risk spread*, can be computed by setting  $\gamma = 0$  in the default spread equation i.e.

$$DR(t, n, s_t) = DS(t, n, s_t | \gamma = 0). \quad (10)$$

The portion of the spread caused by risk aversion, which we label the *default premium spread*, can

then be computed by difference with

$$DP(t, n, s_t) = DS(t, n, s_t) - DR(t, n, s_t). \quad (11)$$

This is the spread a risk-averse investor would ask for in addition to the default risk spread. In the context of a one period bond, this quantity becomes

$$DP(t, 1, s_t) = 4 \times \sum_{i=1}^2 \sum_{j=1}^2 \phi_{s_t^c, i}^c \phi_{s_t^\pi, j}^\pi \left[ -\gamma L_{i,j} \left( \alpha_{i,j}^c (\sigma_i^c)^2 + (\alpha_{i,j}^\pi + \alpha_{i,j}^c) \rho_{i,j} \sigma_i^c \sigma_j^\pi \right) \right].$$

### 2.3 Survival probability

A final theoretical quantity obtained within the framework of this model is the term structure of survival probabilities. This quantity will be used to calibrate our model to match the default probabilities that are observed for the sample period examined in this study.

The survival probability at  $t$ ,  $\Pr_{\mathcal{G}_t}[\tau > t + n \mid \tau > t]$ , is the probability that the default will occur in more than  $n$  periods from  $t$  knowing that the firm has not defaulted at time  $t$  in a given state of our macro factors at  $t$ . Because the one-period default probability is usually small, we use the approximation  $e^{-h_u} \cong 1 - h_u$  to write

$$\Pr_{\mathcal{G}_t}[\tau > t + n \mid \tau > t] = \mathbb{E}_t \left[ \prod_{u=t+1}^{t+n} (1 - h_u) \right]$$

as

$$\Pr_{\mathcal{G}_t}[\tau > t + n \mid \tau > t] \cong \mathbb{E}_t \left[ \exp \left( - \sum_{u=t+1}^{t+n} (\alpha_{s_u} + \alpha_{s_u}^c c_u + \alpha_{s_u}^\pi \pi_u) \right) \right]$$

from our assumption given in equation (6). As shown in Appendix D, an analytical approximation for this expected value is given by:

$$q(t, n, s_t) = \exp \left( -A_{n, s_t}^q - B_{n, s_t}^{q,c} c_t - B_{n, s_t}^{q,\pi} \pi_t \right). \quad (12)$$

As in the previous cases, the coefficients  $A_{n, s_t}^q$ ,  $B_{n, s_t}^{q,c}$  and  $B_{n, s_t}^{q,\pi}$  are obtained recursively starting with  $A_{0, s_T}^q = B_{0, s_T}^{q,c} = B_{0, s_T}^{q,\pi} = 0$ . These coefficients are functions of the maturity  $n$ , the Markov-switching parameters, the unobserved state  $s_t$  and the unknown parameters linking the one-period default probability  $h_t$  with the real consumption growth and inflation.

## 3 Calibration and estimation

### 3.1 Empirical yield curves

To measure the capacity of our model to generate realistic default spread levels through time, estimates of the credit yield spread curves of Aa, A and Baa zero-coupon bonds are required. The spread curves are computed as the difference between the zero-coupon corporate yields and the zero-coupon risk-free yields. We explain here how these risk-free and corporate zero yields are obtained.

The risk free zero-coupon yield data comes from Gurkaynack et al. (1997) which is available from the Federal Reserve web site<sup>2</sup>. The data contains, at a daily frequency, the parameter estimates of the Svensson (1994) model from cross-sections of risk-free coupon bonds. To build our quarterly risk-free curves, we first extract the parameters at the dates that are nearest to the quarterly dates of the National Income and Product Accounts data. We then use these parameters in the Svensson (1994) model with maturities of 0.25, 0.5, 0.75, ..., 10 years to get a risk-free curve for each date of our sample.

For dates ranging from 1987-I to 1996-IV, the corporate zero-coupon yield curves are extracted from the Warga (1998) fixed income database, which contains information on monthly prices, accrued interest, coupons, ratings, callability and returns on investment-grade corporate bonds quoted at Lehman Brothers. All bonds with matrix prices and options were removed; bonds not in Lehman Brothers' bond indexes and bonds with an odd frequency of coupon payments were also dropped. We proceed as in Dionne et al. (2010) to get the month-end estimates of the yield curves on zero-coupon bonds for each rating class from Moody's (Aa, A and Baa). These yield curves are obtained by first estimating the parameters associated with the Nelson and Siegel (1987) model with a non-linear least-square procedure on bonds with maturities of 10 years or less<sup>3</sup>. All bonds with a pricing error higher than \$5 are dropped. We then repeat this estimation and data removal procedure until all bonds with a pricing error larger than \$5 were removed. Using this procedure, 776 bonds were removed (one Aa, 90 A and 695 Baa) out of a total of 33,401 bonds found in the

---

<sup>2</sup><http://www.federalreserve.gov/pubs/feds/2006>

<sup>3</sup>To minimize the chances of converging to a local rather than a global minimum, a grid search of  $20^4 = 160000$  points is performed to find a suitable starting point for the numerical minimization.

industrial sector. We then use these parameters in the Nelson Siegel (1987) model with maturities of 0.25, 0.5, 0.75, ..., 10 years to get a risk-free curve for each date of our sample.

For dates between 1997-I to 2008-IV, we use the zero-coupon yield data available from Bloomberg. These yields are extracted by Bloomberg on samples of coupon bond prices with a spline approach. Bloomberg makes available maturities of 0.25, 0.5, 1, 2, 3, 4, 5, 6, 7, 8, 9, 10, 15, 20 and 30 years on bonds from the industrial sector rated (Standard and Poor's) AA, A+, A, A-, BBB+, BBB, BBB- on a daily frequency. We first extract the data for the dates that are the nearest to the quarterly dates of the National Income and Product Account data. For this sample, for each date and maturity, we first aggregate the yields of A rated bonds with an average i.e. the yield of an A rated bond is the average yield from A+, A, and A- rated bonds. The same is done for BBB bonds. Because our study uses maturities 0.25, 0.5, 0.75, ..., 10 years, we interpolate for these maturities using Nelson-Siegel. We thus estimate for each date, the parameters of the Nelson-Siegel model on the Bloomberg zero-coupon yields with maturities of 0.5, 1, 2, 3, 4, 5, 6, 7, 8, 9, 10 and use these parameters to compute the yields of 0.25, 0.5, 0.75, ..., 10 year bonds. Table 1 presents the average zero-coupon yield spreads for industrial Aa, A and Baa for maturities of 1 to 10 years for the 1987-2008 period.

### 3.2 Markov-switching parameters

This section describes how the parameters of the Markov-switching model are estimated. Let  $\theta$  denote the set of parameters associated with the growth rate equations that is  $\theta = (a_1^c, a_2^c, b_1^c, b_2^c, a_1^\pi, a_2^\pi, b_1^\pi, b_2^\pi, \sigma_1^c, \sigma_2^c, \sigma_1^\pi, \sigma_2^\pi, \rho_{1,1}, \rho_{1,2}, \rho_{2,1}, \rho_{2,2})$  and the transition probability parameters  $\phi = (\phi_{11}^c, \phi_{22}^c, \phi_{11}^\pi, \phi_{22}^\pi)$ . From the time series of consumption levels  $C_0, \dots, C_T$  and price index levels  $\Pi_0, \dots, \Pi_T$  from which we create the sample  $c_1, \dots, c_T, \pi_1, \dots, \pi_T$ , we define  $v_t = (x_1, \dots, x_t)$  as the set of observed data point up to time  $t$  and  $x_t = (c_t, \pi_t)$  as the set of observed consumption growth and inflation at  $t$ . From Hamilton (1994), the log-likelihood function based on the observed sample  $v_T$  up to time  $T$  is then computed with

$$\mathcal{L}(\theta, \phi; v_T) = \sum_{t=2}^T \ln f(x_t | v_{t-1}; \theta, \phi) \quad (13)$$

where

$$f(x_t | v_{t-1}; \theta, \phi) = \eta_t' \times \xi_{t|t-1}$$

represents the conditional likelihood function of  $x_t$  given the observed sample  $v_{t-1}$ . The  $4 \times 1$  vector  $\eta_t$  contains the likelihood value of  $x_t$  conditional on states  $i, j$  and the observed sample  $v_{t-1}$ . The  $4 \times 1$  vector  $\xi_{t|t-1}$  contains the probability of being in state  $i, j$  at time  $t$  conditional on the observed sample  $v_{t-1}$ . Appendix E describes how these quantities can be computed. The maximization of the log-likelihood function  $\mathcal{L}(\theta, \phi; v_T)$  is done numerically using a hill climbing algorithm.

The data series used here are the growth rate of non-durable and services personal consumption expenditures per capita (real) from the first quarter of 1957 to the last quarter of 2008 and the growth rate of the consumption price index for the same period<sup>4</sup>. The data comes from the U.S. Department of Commerce, Bureau of Economic Analysis. The data period contains nine recessions according to the NBER and many of them should be important enough to generate regime shifts. Figure 1 illustrates the temporal evolution of the two growth rates.

The results of the estimation procedure are presented in Table 2. For consumption, regime switching appears in the mean and the volatility. For inflation, only the volatility parameter is found to differ with the regime shifts. We also observe that  $\rho_{12}$  and  $\rho_{22}$  are statistically different from zero.

Within the context of our regime switching model, two conditional probabilities are of interest. The ex-ante probability,  $\xi_{t|t}$ , is useful in forecasting future inflation and consumption rates based on an evolving information set. The smoothed probability,  $\xi_{t|T}$ , estimated using the entire information set available, is of interest for the determination of the prevailing regime at each time point within the sample period. To estimate  $\xi_{t|T} = f(s_t | v_T; \theta, \phi)$  for  $s_t \in \{(1, 1), (1, 2), (2, 1), (2, 2)\}$ , we use the following algorithm developed in Kim (1994):

$$\xi_{t|T} = \xi_{t|t} (\times) [\Phi (\xi_{t+1|T} (\div) \xi_{t+1|t})] \quad (14)$$

where  $(\times)$  and  $(\div)$  means element-by-element multiplication and division respectively and where the transition matrix  $\Phi$  is described in appendix E.

---

<sup>4</sup>Non-durable goods and services expenditures are aggregated naively with a simple sum of both components. We have verified that this approach gives results almost identical those from the chain aggregation approach, described in, for example, Whelan (2000).

Using these probabilities, Figures 2 and 3 examine the fit of the Markov-switching model. Each figure shows three graphs. The first graph plots the actual and fitted values; the second graph shows a quantile-to-quantile plot (qqplot) of the standardized residuals; the third graph looks at the sample autocorrelation coefficients of the residuals. Because there is uncertainty about which state prevails, the fitted values are computed as the expected fitted values over the two possible states. These expected values are computed with the smoothed probabilities. The same procedure is adopted to form the residual series, which are standardized by dividing by the estimated standard deviation in each state. For the consumption growth series, the actual values are often far from the fitted ones. Despite these large residuals, the qqplot and sample autocorrelation coefficients show that the model produces nearly white noise residuals that are well described by a normal distribution. The sample autocorrelations are in most cases within the two standard deviation confidence interval around a value of zero for all lags, except for lags 3 and 8 which are slightly out. For the inflation series, the actual values are closer to the fitted one. Again, from the qqplot and sample autocorrelation coefficients, the model is shown to produce well behave Normal residuals with significant autocorrelations in lags 1, 3 and 6.

### 3.3 States of consumption and inflation

We examine here more closely the estimated probabilities for the state of the Markov chain for the period 1987-I- to 2008-IV which corresponds to the data period we have, regarding our risky bond information. Note that we used the estimates of  $\theta$  and  $\phi$  from Table 2.

The results of the estimation procedure are presented in Figure 4. In most quarters, one of the four values of the mass function clearly dominates the other. On a total of 88 observations, 80 are larger than 0.6 and 73 are larger than 0.8. The estimated state  $\hat{s}_t$  at time  $t$  is the one for which the estimated probability in vector  $\xi_{t|T}$  is the highest among all the possible states. The results are reported in Figure 5.

The interpretation of the estimated states are as follows:  $s_t = (1, 1)$  corresponds to a state of high level and low consumption growth volatility combined with low volatility of inflation;  $s_t = (1, 2)$  is the state of high level and low volatility of consumption growth with high volatility of inflation;  $s_t = (2, 1)$  corresponds to the low level and high volatility of consumption growth combined with



low volatility of inflation; finally,  $s_t = (2, 2)$  is for low level and high volatility of consumption growth with more volatile inflation.

A detailed examination of the results reveals that the estimated state of consumption is 1 for two distinct time periods: 1987-I to 1990-I and for 1991-IV to 2007-I. Otherwise, the estimated state of consumption is 2. For inflation, we note two changes of regime. Indeed, the state of inflation is estimated to 2 for the time period 1987-I to 1990-IV and becomes 1 for the time period 1991-I to 2005-I and then comes back to two until the end of the sample. If we consider the system globally, the estimated state is  $s_t = (2, 2)$  near the 1991 and 2008 NBER recessions. In between these NBER recessions, the system stays in state  $s_t = (1, 1)$ , even with the presence of an official NBER recession in 2001. Prior to the 1991 NBER recession, the estimated state is  $s_t = (1, 2)$ . Figure 6 illustrates the changes of regime behavior for the growth rate of our two factors. The consumption growth rate and inflation clearly exhibit different behavior in each regime.

Note that the observed average consumption growth rate and volatility are 0.51% and 0.27% during the periods corresponding to  $\widehat{s}_t^c = 1$  while they are -0.15% and 0.37% during the periods corresponding to  $\widehat{s}_t^c = 2$ . The observed average inflation growth rate and volatility are 0.64% and 0.21% during periods for which  $\widehat{s}_t^\pi = 1$  and 0.93% and 0.59% when  $\widehat{s}_t^\pi = 2$ . These numbers correspond roughly to the unconditional mean and standard deviations that can be computed from the parameter estimates. For consumption, these unconditional mean and standard deviations are 0.61% and 0.38% for  $\widehat{s}_t^c = 1$  and 0.075% and 0.55% for  $\widehat{s}_t^c = 2$  while they are 0.68% and 0.30% for inflation when  $\widehat{s}_t^\pi = 1$  and 1.2% and 0.75% when  $\widehat{s}_t^\pi = 2$ .

As mentioned, our model did not capture the 2001 recession for consumption growth. This conclusion seems more related to the consumption variable than the model. During the 1987-2008 period, there were three economic recessions: 06-1990/03-1991, 03-2000/11-2001, and 12-2007/06-2009. It is now known that the 2001 recession was different when compared to the other recessions. As documented by Stock and Watson (2003), the 2001 recession started when businesses cut their expenditures, particularly their investments in information technology which led declines in manufacturing output and stock market. During that recession, personal consumption and housing index did not register significant negative values (Evans et al., (2002)), while during the 1990 recession, consumption had a sharp fall explained by uncertainty associated with Iraq's invasion

and the variation of oil prices (Stock and Watson, (2003)). The NBER dating committee reported that movements in payroll employment were important in choosing March 2001 for the beginning of the recession and for the observation that the economy was in recession. When we analyze the Chicago Fed National Activity Index (CFNA), we see that within the full indicator index during this recession, there was significant degrees of heterogeneity among the category indexes. For example, Employment, unemployment and labor hours, and the Production and income indexes fell as the overall index while the consumption category hardly registered any negative values. In fact, consumer spending continued to experience positive growth during much of the recession: “Simply using the consumer category as a proxy for the CFNA index would clearly result in different inferences” (Evans et al., 2002, p. 32). It seems that some individual indicators provided false signals on the state of the aggregate economy while other individual indicators did pretty well.

Another particularity of the 2001 recession is related to financial indicators. The term spread (the ten-year Treasury bond rate minus the Fed funds rate) on government debt and stock returns provided advance warning on the 2001 recession but fall short of providing a signal of previous recessions (Stock and Watson, (2003)). These modifications can be attributed to changes in industrial economies since the 1990s, including the development of the financial markets. The U.S. recession of 2007-2009 period also reflects an important change in U.S. economy. This time, it was preceded by an important financial crisis. But it is the household leverage growth and the dependence on credit card borrowing that drove the recession (Mian and Sapi, (2009)). Durable consumption was again among the serious signs of weakness in the economy and dramatic increase in household leverage from 2000 to 2007 was the primary driver of the last recession.

In conclusion, the 2001 recession was a different recession from the other two analyzed in this paper. As our model also shows, consumption was not an important driver of the 2001 recession. It seems however that eight of the past ten recessions were related to problems of consumption (housing and consumer durables) (Leamer, (2009)).

### 3.4 Preference parameters

In this section, we explain how the subjective discount factors  $\beta = (\beta_{11}, \beta_{12}, \beta_{21}, \beta_{22})$  and the risk aversion coefficient  $\gamma$  are estimated. We assume that the parameters  $\theta$  and  $\phi$  of the Markov-

switching processes are known and are set to their estimated value.

Because the state of the economy is unknown at a particular point in time, we define the theoretical zero-coupon bond price as the expected bond price, with the expectation computed over the possible states of the Markov chain<sup>5</sup>. Using  $\hat{\theta}$  and  $\hat{\phi}$ , the estimated parameters for the Markov chain, the zero-coupon risk-free bond price at time  $t$  is defined as

$$\bar{P}(t, n, \beta, \gamma) = \sum_{k=1}^4 \hat{\xi}_{t|t}(k) \times P(t, n, s_t(k))$$

where  $\hat{\xi}_{t|t}(k)$  is the estimated ex-ante probability of being in one of the four possible states at time  $t$ ,  $s_t(k)$  denotes the  $k$ th possible value of  $s_t$  and  $P(\bullet)$  is the risk-free zero-coupon bond price computed with equation (4). This price is a function of the estimated Markov-switching model parameters  $\hat{\theta}$  and  $\hat{\phi}$  and the preference parameters. The estimates of the preference parameters are obtained by minimizing the following objective function with respect to  $\beta$  and  $\gamma$ :

$$Q(\beta, \gamma) = \sum_t \sum_{n=1}^{40} \left( -\frac{\ln \bar{P}(t, n, \beta, \gamma)}{n/4} - y_g(t, n) \right)^2 \quad (15)$$

with the constraints that  $0 < \beta_{i,j} < 1$  and where  $y_g(t, n)$  is the yield to maturity of a zero-coupon government bond estimated with the Nelson and Siegel (1987). We are thus using our quarterly time series of estimated risk-free spot rates term structures, covering the 1987 to 2008 period, to estimate the preference parameters. Each term structure in this sample covers maturities up to ten years (40 quarters).

The calibration procedure obtains estimates of  $\hat{\gamma} = 0.7919$  and  $\hat{\beta} = \{0.9999, 0.9984, 0.9925, 0.9999\}$ . As in other studies, our estimates of the time preference parameters are close to one. See for example Hansen and Singleton (1982, 1984). As discussed in Kocherlakota (1990), such values for this coefficient are not unrealistic and coherent with well-defined equilibria in growth economy. The restriction that these parameters be smaller or equal to one is imposed during the estimation. This avoids the potential problem of having negative yields in some states. To study how well the model fits the data, we report the root mean squared errors (*rmse*), the average absolute errors

---

<sup>5</sup>Another approach could use the price prevailing in the state with the highest filtered probability. However, we have verified that such an approach has little impact on the results. The highest filtered probability is often in the neighborhood of 0.9 or 0.95. Because of this, the average of the bond prices in the four states using the filtered probabilities is almost identical to the price in the state with the highest probability.

(*aae*), the average errors (*ae*) and the average fitted yields (*avg fitted*) in Table 3. The average fitted yields have a positive slope, as does the average observed yield, but the average errors are large. The top graph in Figure 7 illustrates the evolution of the observed and fitted 10 years to maturity yield from which we can visualize the large errors. A detailed examination of the fitted and observed risk-free yield curves shows that in many cases, the slope and curvature do not agree.

Because of these large errors in the fitted risk-free yields, we look at an additional calibration approach that will provide a robustness check of our final results regarding the estimation of default spreads. This alternative calibration approach allows a tighter fit to the risk-free curves, at the cost of some time inconsistencies, by fitting different values of  $\beta$  and  $\gamma$  through time. This cross-sectional estimation procedure is similar to the one adopted in Brown and Dybvig (1986) for the Cox et al. (1985) model. It produces, at each time-point, implied estimates with the available cross section of bond yields at that time. More precisely, at each quarter of our sample, we estimate a set of preference parameters by minimizing the following objective function with respect to  $\beta$  and  $\gamma$  :

$$\tilde{Q}(t, \beta, \gamma) = \sum_{n=1}^{40} \left( -\frac{\ln \bar{P}(t, n, \beta, \gamma)}{n/4} - y_g(t, n) \right)^2. \quad (16)$$

This objective function is thus fitting, at a given time point, the theoretical term structure of risk-free zero-coupon yields (for maturities of 0.25 year (1 quarter) to 10 years (40 quarters)) with the observed one. For example, the implied  $\beta$  and  $\gamma$  estimated for 1987:I are obtained by finding the  $\beta$  and  $\gamma$  values minimizing the distance between the theoretical term structure of zero-coupon risk-free yields in 1987:I with the observed term structure of zero-coupon risk-free yields in 1987:I. The implied  $\beta$  and  $\gamma$  got in 1987:II are obtained by finding the  $\beta$  and  $\gamma$  values minimizing the distance between the theoretical term structure of zero-coupon risk-free yields in 1987:II. This process goes on for each quarter in our sample. We thus end up with time series of estimated  $\beta$  and  $\gamma$ . This procedure gives a calibrated model that can accurately replicate the level, slope and curvature of the risk-free term structures at each time point of our sample. These time varying parameter values will affect the spreads estimates only through the risk aversion parameters because the  $\beta_{i,j}$  are not functions of the theoretical spread expression (see equation (8) and (9)). The preference parameters estimated with this calibration procedure are presented in Figure 8. The average of

the  $\gamma$ 's is 0.1782 while they are 0.9964, 0.9956, 0.9880, and 0.9859 for the  $\beta$ 's. Table 4 reports the fit of this calibration procedure, which is, as expected, closer to the actual yields when compared with the results from the earlier procedure. Figure 7 illustrates the evolution of the observed and fitted 10 years to maturity yields. The top graph shows the fit with the constant parameter while the bottom graph show the case of the time-varying parameters.

### 3.5 Conditional default probability parameters

We describe here the calibration procedure for the conditional default probability parameters  $\alpha = (\alpha_{1,1}, \alpha_{1,2}, \alpha_{2,1}, \alpha_{2,2}, \alpha_{1,1}^c, \alpha_{1,2}^c, \alpha_{2,1}^c, \alpha_{2,2}^c, \alpha_{1,1}^\pi, \alpha_{1,2}^\pi, \alpha_{2,1}^\pi, \alpha_{2,2}^\pi)$  required by our corporate bond pricing and credit spread model.

Because we want to capture the time-varying nature of default probabilities, we calibrate these parameters with a yearly sample of default probability term structures. This sample is estimated from transition matrices obtained from Moody's Corporate Bond Default Database with the cohort method of Carty and Fons (1993) and Carty (1997). One matrix is estimated for each year of our sample period, for a total of 22 matrices. Each matrix is estimated with one year of default data. For example, the transition matrix for 1987 is estimated using the cohort method with default data from the beginning of January 1987 to the end of December 1987. The default probability matrix is then obtained from those matrices by first converting them into a generator (see Christensen et al. (2004)) with the approach suggested in Israel et al. (2001). With this generator, the transition matrix for a horizon of  $n$  periods and the corresponding default probability can be computed with

$$\exp\left(\frac{n}{4}\mathbf{G}\right) = \sum_{i=0}^{\infty} \frac{\left(\frac{n}{4}\mathbf{G}\right)^i}{i!}$$

where  $\mathbf{G}$  is the generator matrix. The term structure of empirical survival probabilities for the appropriate credit class is then extracted from these computed matrices generated with  $n = 1$  to 40.

The estimates for  $\alpha$  are obtained by minimizing the squared errors between our theoretical and empirical survival probabilities. Again, as in the case of the theoretical risk-free bond prices, we define the survival probability as the expected survival probability, with the expectation taken over

the regime of the Markov chain. More formally, the expected survival probability is defined as :

$$\bar{q}(t, n, \alpha) = \sum_{k=1}^4 \hat{\xi}_{t|t}(k) \times q(t, n, s_t(k))$$

where  $\hat{\xi}_{t|t}(k)$  is the estimated ex-ante probability of being in one of the four possible states at time  $t$ ,  $s_t(k)$  denotes the  $k$ th possible value of  $s_t$  and  $q(\bullet)$  is the survival probability computed with equation (12). The sum of squared error function is then defined as:

$$R(\alpha) = \frac{1}{40} \sum_{t=1}^{88} \sum_{n=1}^{40} (q^{\text{emp}}(t, n) - \bar{q}(t, n, \alpha))^2 \quad (17)$$

where  $q^{\text{emp}}(t, n)$  is the empirical survival probability obtained at quarter  $t$  from a transition matrix. Notice that since we have one term structure of default probability per year,  $q^{\text{emp}}(t, n)$  is identical for the four quarters of a given year.

The minimization of the above function is done numerically under the constraint that the one-period conditional default probability is non-negative. The estimated parameters of the conditional default probability are shown in Table 5. It is interesting to notice that for each credit classes, the consumption and inflation parameters in state  $s_t = (2, 2)$  are large negative numbers, indicating that large negative values for these variables will increase the one period conditional default probability specified as  $h_t = \alpha_{s_t} + \alpha_{s_t}^c c_t + \alpha_{s_t}^\pi \pi_t$ .

Figure 9 reproduces the estimated one period conditional default probability computed as  $1 - \bar{q}(t, 1, \hat{\alpha})$  along with the consumption growth and inflation. It is interesting to note that the conditional default probability jumps during state  $s_t = (2, 2)$  i.e. the low level high volatility of consumption growth and high volatility of inflation. These periods are within two out of the three NBER economic recessions found in our sample. Table 6 reports the correlation between consumption and inflation along with their correlations with the estimated default probabilities.

Without any conditioning on the regimes, the estimated probabilities for all credit classes are negatively correlated with the real consumption growth rate with estimated correlations around  $-0.5$  over the 1987-2008 period. However, these signs are changing when conditioning on the regime. For state  $s_t = (2, 2)$ , the correlation is around  $-0.4$  for all classes but switches in sign for state  $s_t = (1, 2)$ . For the other states, the correlations can be positive or negative, depending on the

credit class. For inflation, without conditioning on the regime, the estimated probabilities are also negatively linked with the probabilities. As for consumption, the correlation is strong and negative in state  $s_t = (2, 2)$ . For the other states, the signs change across the different credit classes.

### 3.6 Recovery rates

The loss given default parameters  $L_{i,j}$  (1-the recovery rate) are estimated with an annual time series of recovery rates from Moody's (2009) for the years 1987 to 2008. Moody's rates are defined as the ratio of the defaulted bond's market price to its face value, as observed 30 days after the default date, for all bonds irrespective of their rating. Because these recovery rates are for all bond ratings, they can be interpreted as the recovery rates of bonds with an average risk.

The limited length of the annual 1987-2008 time series makes it difficult to obtain meaningful estimates for all four possible states. Because of this, we assume a recovery rate varying with the states of consumption only. We obtain an average recovery rate of 0.41 for the state of low volatility of consumption growth (years 1987 to 1989 and 1992 to 2006) prevailing in our 1987-2008 sample period and an average of 0.38 for the high volatility state (years 1990 to 1991 and 2007 to 2008).

### 3.7 Default spreads in corporate yield spreads

With the parameters of our default spread model obtained from consumption, inflation, risk-free yields, and default data, we examine the theoretical default spreads generated by the model. As mentioned in the introduction, the default spread estimates are computed without using the actual corporate yield spreads to avoid the potential bias associated with missing factors.

Figure 10 plots a two scale graph showing the evolution of the estimated default spread for ten years to maturity Aa, A and Baa zero-coupon bonds in conjunction with the observed yield spread for the case of the constant preference parameter estimates i.e. with  $\hat{\gamma} = 0.7919$  and  $\hat{\beta} = \{0.9999, 0.9984, 0.9925, 0.9999\}$ . As shown by the graphs, the estimated default spreads show some similarities with the observed yields spreads. For example, the sharp increases at the end of 1990 and in 2007-08 are well captured by the model, without the use of yield spread data. The 2001 sharp increase is however not captured by our model. Figure 6 indicates that our observed factors do not show large variations for this 2001 NBER recession. Hence, our model, which specifies

default probabilities that are functions of these state variables, is unable to capture the spread increase for this period.

Table 7 presents statistics concerning these estimated default spreads. This table also reports the statistics across the different states of consumption and inflation. The estimated default spread represents, on average, 8% and 14% and 37% of the 10-year yield spreads for A, Aa and Baa bonds. For Baa bonds, this is higher than numbers found in Elton et al. (2001), who reported a maximum of 25% from an analysis partially using the same data. For Aa and A bonds, the proportions are roughly stable across the different states of the Markov-switching process. For Baa bonds, this proportion varies in the different states. For example, in state  $s_t = (1, 2)$ , the high consumption growth and volatile inflation state, the proportion is 43% while it goes down to 28% in state  $s_t = (2, 2)$ , the low consumption and high volatility of inflation state. For this state, the default spreads showed sharp increases, but not as large as the increases observed for the credit spreads. Further, the volatility of our theoretical default spreads are small when compared with the yield spread volatility for the whole sample and in all subperiods. In general, our estimated default spreads are positively related to the yields spreads with correlations around 50% for all states. Across the different regimes, these correlations are typically positive and strong in state  $s_t = (2, 2)$ . For the other states, this correlation is changing in sign across the different ratings. This indicates that an increase in default spread is not typically linked to an increase in the overall spread.

The correlation of the default spreads with consumption and inflation is negative. When conditioning on the possible states, we observe that this link with consumption is not constant across the different regimes and ratings except for state  $s_t = (2, 2)$  which is negative for all ratings. Figure 11 shows the links between our estimated spreads and our observed factors for Baa bonds. Much of the variation is found for state  $s_t = (2, 2)$ . For the other states, the positive or negative relations are weak because the estimated default spreads do not vary much when the factors are varied. Similar pictures are obtained for the Aa and A rating classes.

The part of the default spread associated with the default premium is estimated to be negligible. Hence, using the preference parameters from the fit of the theoretical risk-free yield curves with the observed yield curves, we compute default risk premia that are small, relative to our default spread.



The expression for the one period yield spread shows that the risk aversion parameter impacts on the spreads through the squared volatilities and covariance; it is a second order effect caused by the convexity of our pricing kernel and approximate recovery factor. A possible explanation for the low default premium spread obtained here is thus the low volatility levels of consumption growth and inflation. For reasonable values of the risk aversion parameter, these low volatilities do not easily produce high default premia. In other words, given the estimated volatility levels, a much higher value for the risk-aversion coefficient would be required to generate higher default premia.

We examine here the robustness of our results to the preference parameter estimates. Table 8 presents the credit spreads and proportions computed with the time-varying set of preference parameters estimated in Section 3.4. The results are similar to those from the constant preference parameter presented in Table 7. This can be explained by looking at equations (8) and (9), which show that the theoretical expressions for the default spread is a function of the risk-aversion parameter only, i.e. the time preference parameters in the  $A_{n,st}^p$  and  $A_{n,st}^v$  functions cancel each other out. Given that, at the current level of volatilities, the theoretical default spreads are not sensitive to the risk aversion parameter, the constant and time varying parameter estimates for  $\gamma$  produce similar results, even if the two estimates are different on average.

## 4 Credit default swaps

To get more insights about the capacity of the model developed above to estimate aggregate default proportions, we examine here credit default swaps (CDS hereafter). CDS are insurance contracts written on the notional value of a corporate bond. In case of default, the insured party delivers the bond and gets the notional value from the insurer. To benefit from the insurance protection, the insured pays the CDS premium regularly to the insurer over the life of the contract or until the time of default. Typically, the CDS premium is paid on a quarterly basis with a contract life of 5 years. It is clear that such CDS premia should reflect the possibility of default without any of the tax effects potentially present with bonds. However, as pointed in Jarrow (2010) and Berndt et al (2007), CDS premia are also expected to include the effect of asymmetric information monitoring costs, and a liquidity risk premium due to a quantity impact of trades on the price.

We proceed here as in the above sections i.e. we confront the model with data aggregated by

rating classes. It should be noticed that we will focus on CDS premia for zero-coupon bonds, as in our previous analysis. In reality, CDS are written on bonds with coupons. The model developed here is thus used as rough approximation allowing us to see how much of the aggregate CDS premia our default risk model can explain. It should also be mentioned that, as is the case with bonds, our model for CDS premia only accounts for default. Hence, given that other factors can influence the magnitude of a CDS premium, we expect that the default CDS premia estimated with our model will explain less than 100% of these observed quantities.

#### 4.1 Pricing model

In our zero-coupon corporate bond pricing model, the value of a CDS premium is obtained by solving for the quarterly payment which makes the present value of the future premia (the premium leg) equal to the protection value (the protection leg). The premium leg pays  $\frac{w}{4}$  dollars every quarter until maturity if there is no default or until the time of default. The risk of such cash-flows is linked with the possibility of default for the firm. The proper discount factor for these is thus a corporate zero-coupon bond price paying one dollar at maturity, with a loss given default of 100%, since the full payment is lost in case of default. Hence, the present value of the premium leg is written as:

$$V^{premium}(t, n, s_t) = \frac{w_{s_t}}{4} \sum_{i=0}^{n-1} V(t, i, s_t | L_{s_t} = 1).$$

The protection leg consists of a single payment at default time. Typically, this payment is equal to the face value of the bond (in exchange of the defaulted bond). In our framework, it is not possible to build a closed form approximation for such a payment. We instead assume that the payment takes the form of a zero-coupon risk-free bond in exchange of the defaulted bond at the time of default. This risk-free zero-coupon bond is the discounted insured face value of the zero-coupon corporate bond. Such an assumption amounts to say that holding a risky bond and the protection leg of the CDS is equivalent to hold a risk-free zero-coupon bond (see Duffie 1999) i.e.

$$V(t, n, s_t) + V^{protection}(t, n, s_t) = P(t, n, s_t)$$

which leads to

$$V^{protection}(t, n, s_t) = P(t, n, s_t) - V(t, n, s_t).$$

Equating the premium leg with the protection leg and solving for the annual premia  $w$  leads to the following formula that is used in the empirical analysis that follows:

$$w_{s_t} = 4 \times \frac{P(t, n, s_t) - V(t, n, s_t)}{\sum_{i=0}^{n-1} V(t, i, s_t | L_{s_t} = 1)}. \quad (18)$$

## 4.2 Data and results

The CDS data is from Credit Market Analysis and available in Datastream. The CDS data cover the years 2003 to 2008 and gives CDS premia for individual firms with various ratings. The data is aggregated as follows. First, all data points with a veracity score of 4 and higher are discarded<sup>6</sup>. Second, all maturities different from 5 years are discarded since this is typically the most actively traded maturity. A rating is then assigned to each CDS premium using the firm’s S&P rating at the date of the reported CDS premium. For each quarter of years 2003 to 2008, we aggregate the data by computing the median of the CDS premia for different credit classes. Medians are used because the distribution of the CDS premia at a given time point contains few extreme observations making the mean a doubtful measure of central tendency.

The results of the comparison between our theoretical CDS and observed CDS premia are reported in table 9. As in the previous sections, the theoretical CDS premia are computed with the parameters obtained from the calibration steps. The fixed preference parameter set is used. These estimated default proportions represent, on average, 21%, 35% and 76% of the 5-year CDS premia for A, Aa and Baa ratings. As expected, these default CDS premia do not explain 100% of the observed CDS premia since our model omit the effect of other factors such as the asymmetric information monitoring costs and liquidity (see Jarrow (2010)). In order to make meaningful comparisons, the second panel of this table reports the estimated default spreads and proportions obtained with corporate yield spreads for the same maturity (5 years) and period. These proportions are 6%, 12% and 37% for Aa, A and Baa rated bonds. Thus, as expected, the proportions of default in observed CDS premia are higher than those obtained with bonds. It should be noticed, however, that the estimated default CDS premia in the top panel are roughly equal to the estimated default

---

<sup>6</sup>The “veracity score” is an indicator of the quality of the reported data. A score of 1 is an actual trade; a score of 2 is a “firm quote” while a score of 3 is a quote. Scores higher than 3 are for data points obtained with some form of interpolation.

spreads in the bottom panel, showing the coherence of the model to estimate default components with different instruments. Again, the average premia are roughly the same across each state, except for the recession state where they increase. This confirms that default can be linked to an undiversifiable macroeconomic default risk factor. For Aa and A ratings, the proportions for both CDS and yield spreads are roughly stable across the different states of the Markov-switching process. For Baa ratings, this proportion varies in the different states. In state  $s_t = (1, 2)$ , the high consumption growth and volatile inflation state, the proportion is 95% while it goes down to 62% in state  $s_t = (1, 1)$ , the high consumption growth and low volatility of inflation state. As it is the case with yield spreads, the volatility of our theoretical default CDS premia are small when compared with the CDS premia volatility.

## 5 Conclusion

We proposed here an approach for estimating the default spread component of corporate yield spreads. Our model uses observed macroeconomic factors in a reduced form framework and is built on the objective measure. We use a pricing model with discrete regime shifts in consumption growth and inflation. The parameters of consumption, inflation, and conditional default probability variations over time are also functions of the discrete regime shifts. Using consumption, inflation, risk-free yield, and default data, the model is calibrated over the 1987-2008 period.

Our results indicate that our factors are linked to sharp increases in default spreads in two out of three NBER economic recessions. During these recessions, both inflation and consumption growth are negatively linked with default spreads. This result indicate that, in some regimes, the spread level is sensitive to a macroeconomic market-wide undiversifiable risk. Our results also indicate that sharp increases in spreads are not necessarily linked to macroeconomic variables. The sharp increase in 2001 is not captured by our model because this period is found to be in a high consumption growth and low inflation risk regime. This result is consistent with the literature on forecasting models indicating that consumption growth hardly registered negative values in 2001. Our results can explain about half of the yield spread for Baa bond, which can be considered as the average bond in the market. This is in line with the recent study of Giesecke et al (2010), who show that, over the last 150 years, default risk represented about fifty percent of credit spreads.

These authors also document that illiquidity of the bond market is probably the main factor that explains the difference between default spread and credit spread. Our results indicate that this illiquidity effect is perhaps stronger in recession periods. An analysis of credit default swap data obtains default components that are of similar magnitude to those estimated with the bond pricing model. These default components results in higher proportions of default in CDS data. This is consistent with the literature which finds that such instruments are much less influenced by other factors such as liquidity and taxes. Finally, we also find that almost all of the estimated default spread is explained by the default risk while a negligible fraction is due to the default risk premium. This finding is explained by the low volatility of the consumption growth and inflation, which are the main drivers of the default risk premium in this model. Two extensions to this research might be to consider different macro factors, more correlated with economic recessions than consumption and to introduce liquidity risk explicitly in the model.

## References

- [1] Amato, J.D. and M. Luisi, 2006, Macro Factors in the Term Structure of Credit Spreads, Bank of International Settlements, Working Paper 203.
- [2] Ang, A., Bekaert, G. and M. Wei, 2008, The term Structure of Real Rates and Expected Inflation, *Journal of Finance* 63, 797-849.
- [3] Bansal, R. and H. Zhou, 2002, Term Structure of Interest Rates with Regime Shifts, *The Journal of Finance* 57, 1997-2043.
- [4] Berndt, A., R. Jarrow and C. Kang, 2007, Restructuring Risk in Credit Default Swaps: an Empirical Analysis, *Stochastic Processes and their Applications* 117, 1724 - 1749.
- [5] Brown, S. and P. Dybvig, 1986, The Empirical Implications of the Cox, Ingersoll, Ross Theory of the Term Structure of Interest Rates, *Journal of Finance* 41, 617-30.
- [6] Carty, L. and J. Fons, 1993, Measuring Changes in Credit Quality, *Journal of Fixed Incomes* 4, 27-41.
- [7] Carty, L., 1997, Moody's Rating Migration and Credit Quality Correlation, 1920-1996, Special Comment, Moody's Investors Service, New York.
- [8] Cenesizoglu, T., and E. Badye, 2010, The Effect of Monetary Policy on Credit Spreads, working paper, HEC Montréal.
- [9] Chen, L., Collin-Dufresne, P., and R. S. Goldstein, 2009, On the Relation Between Credit Spread Puzzles and the Equity Premium Puzzle, *Review of Financial Studies* 22, 3367-3409.
- [10] Christensen, J., E. Hansen, and D. Lando, 2004, Confidence Sets for Continuous-Time Rating Transition Probabilities, *Journal of Banking and Finance* 28, 2575-2602.

- [11] Cochrane, J.H., 2005, *Asset Pricing*, revised edition, Princeton University Press.
- [12] Cox, J., J. Ingersoll, and S. Ross, 1985, A Theory of the Term Structure of Interest Rates, *Econometrica* 53, 385-408.
- [13] Dai, Q., Singleton, K. and W. Yang, 2007, Regime Shifts in a Dynamic Term Structure Model of U.S. Treasury Bond Yields, *Review of Financial Studies* 20, 1669-1706.
- [14] David, A., 2008, Inflation Uncertainty, Asset Valuations, and the Credit Spreads Puzzle, *Review of Financial Studies* 21, 2487-2534.
- [15] Davies, A., 2004, Credit Spread Modeling with Regime Switching Techniques, *Journal of Fixed Income* 14, 36-48.
- [16] Dionne, G., G. Gauthier, K. Hammami, M. Maurice, and J.G. Simonato, 2010, Default Risk in Corporate Yield Spreads, *Financial Management*, summer, 707-731.
- [17] Duffie, D., 1999, Credit Swap Valuation, *Financial Analysts Journal*, January-February: 73-87.
- [18] Duffie, D. and K.J. Singleton, 1999, Modeling Term Structures of Defaultable Bonds, *Review of Financial Studies* 12, 687-720.
- [19] Elton E. J., M.J. Gruber, D. Agrawal and C. Mann, 2001, Explaining the Rate Spread on Corporate Bonds, *The Journal of Finance* 56, 247-277.
- [20] Evans, M.D.D., 2003,, Real Risk, Inflation Risk, and the Term Structure, *Economic Journal* 113, 345-389.
- [21] Evans, C.L, Te Liu, C. and G. Pham-Kanter, 2002, The 2001 Recession and the Chicago Fed National Activity Index: Identifying Business Cycle Turning Points, *Economic Perspectives*, Federal Reserve Bank of Chicago 26 (october), 26-43.
- [22] Farnsworth, H. and T. Li, 2007, The Dynamics of Credit Spreads and Rating Migrations, *Journal of Financial and Quantitative Analysis* 42, 595-620.
- [23] Giesecke, K., Longstaff, F., Schaefer, S. and I Strebulaev, 2010, Corporate Bond Default Risk: a 150-Year Perspective, Working paper 15848, National Bureau of Economic Research.
- [24] Gurkaynak, R., Sack, B. and J. Wright, 2007, The U.S. Treasury Yield curve: 1961 to the Present, *Journal of Monetary Economics* 54, 2291-2304.
- [25] Hamilton, J.D., 1994, *Time Series Analysis*, Princeton University Press.
- [26] Hansen, L. and K. Singleton, 1982, Generalized Instrumental Variables Estimation of Nonlinear Rational Expectations Models, *Econometrica* 50,1269-1286.
- [27] Hansen, L. and K. Singleton, 1984, Errata, *Econometrica* 52, 267-268.
- [28] Higashi, Y., Hyogo K. and N. Takeoka, 2009, Subjective Random Discounting and Intertemporal Choice, *Journal of Economic Theory* 144, 1015-1053.
- [29] Israel, R., J. Rosenthal, and J. Wei, 2001, Finding Generators for Markov Chains via Empirical Transition Matrices, with Applications to Credit Ratings, *Mathematical Finance* 2, 245-265.
- [30] Jarrow, R., 2010, *The Economics of Credit Default Swaps (CDS)*, Johnson School Research Paper Series #31-2010.

- [31] Kim, C.J., 1994, Dynamic Linear Models with Markov-Switching, *Journal of Econometrics* 60, 1-22.
- [32] Kocherlakota, N.R., 1990, "On the Discount Factor in Growth Economies, *Journal of Monetary Economics* 25, 43-47.
- [33] Leamer, E, 2007, Housing and the Business Cycle, NBER working paper.
- [34] Moody's, 2009, Special comments - Corporate Default and Recovery Rates, 1920-2008.
- [35] Mian, A. and A. Sapi, 2009, The Household Leverage-Driven Recession of 2007 to 2009, Working paper, University of Chicago Booth School of Business.
- [36] Nelson, R. and F. Siegel, 1987, Parsimonious Modeling of Yield Curves, *Journal of Business* 60, 473-489.
- [37] Pesaran, M. H, Schuermann, T, Treutler, B.J. and S. Weiner, 2006. Macroeconomic Dynamics and Credit Risk: A Global Perspective, *Journal of Money, Credit and Banking* 38, 1211-1262.
- [38] Salanié, F. and N. Treich, 2006, Over-Savings and Hyperbolic Discounting, *European Economic Review* 50, 1557-1570.
- [39] Svensson, L., 1994, Estimating and Interpreting Forward Interest Rates: Sweden 1992-1994, Center for Economic Policy Research, Discussion Paper 1051.
- [40] Stock, J. and M. Watson, 2003, How Did Leading Indicator Forecasts Perform During the 2001 Recession?, *Federal Reserve Bank of Richmond Economic Quarterly* 89, 71-89.
- [41] Warga, A., 1998, Fixed Income Database, University of Houston, Houston, Texas.
- [42] Whelan, K., 2000, A Guide to the Use of Chain Aggregated NIPA Data, working paper, Federal Reserve Board.

# Appendices

## A Asset prices with a stochastic subjective discount factor

Let  $p_t$  be the price of an asset at time  $t$ ,  $X_{t+1}$  denotes the asset value at time  $t+1$ ,  $\omega_t$  represents the number of assets bought at time  $t$ ,  $C_t$  is consumption and  $\epsilon_t$  stands for other earnings. With a time-separable utility function, a consumer determines at time  $t$  its consumption, present and future, such to maximize

$$g_t(C_t, \dots, C_T) = \mathbb{E}_t \left[ \sum_{s=t}^T \left( \prod_{s'=t+1}^s \beta_{s'} \right) u(C_s) \right] \quad (19)$$

under the budget constraint  $C_t = \epsilon_t + \omega_{t-1}X_t - \omega_t p_t$ . Here,  $\beta_{s'}$  represents the random subjective discount factors with the convention  $\prod_{s'=t+1}^t \beta_{s'} = 1$ . The first-order condition requires that  $\frac{\partial g_t}{\partial \omega_{s^*}} = 0$  if and only if

$$\mathbb{E}_t \left[ \left( \prod_{s'=t+1}^{s^*} \beta_{s'} \right) u'(C_{s^*}) p_{s^*} \right] = \mathbb{E}_t \left[ \left( \prod_{s'=t+1}^{s^*+1} \beta_{s'} \right) u'(C_{s^*+1}) X_{s^*+1} \right], \quad (20)$$

where  $s^* \in \{t, t+1, \dots, T-1\}$ . As a special case, using  $s^* = t$ , the time  $t$  price must satisfy

$$p_t = \mathbb{E}_t \left[ \beta_{t+1} \frac{u'(C_{t+1})}{u'(C_t)} X_{t+1} \right], \quad t \in \{0, 1, \dots, T-1\}. \quad (21)$$

The time consistency of the solution is shown by replacing back Equation (21) in the left hand-side of Equation (20). One can show that Equation (20) is therefore satisfied for any  $s^* \in \{t, t+1, \dots, T-1\}$ . This result can be adapted to the case with inflation and a power utility function to obtain equation (2).

## B Risk-free zero-coupon bond price analytical approximation

In this section, we derive functions  $A_{n,s_t}^p$ ,  $B_{n,s_t}^{p,c}$ , and  $B_{n,s_t}^{p,\pi}$  appearing in the analytical approximation formula of the zero-coupon risk-free bond price  $P(t, n, s_t)$ . Note that for the derivation in this appendix, for notational convenience, we drop the  $p$  superscript from the  $A$  and  $B$  functions. The derivation is based on two approximations: (i) the true time  $t$  value of the zero-coupon bond given the actual states of consumption and inflation,  $\tilde{P}(t, n)$ , is well approximated by an exponential function (instead of a sum of exponential functions) and (ii) the function  $\exp(x)$  may be replaced by its Taylor expansion around zero truncated after the second term, that is,  $\exp(x) \cong 1 + x$ . Starting from equation (2), we have

$$1 = \mathbb{E}_t \left[ M_{t,t+1} \frac{\tilde{P}(t+1, n-1, s_{t+1})}{\tilde{P}(t, n, s_t)} \right] \cong \mathbb{E}_t \left[ M_{t,t+1} \frac{P(t+1, n-1, s_{t+1})}{P(t, n, s_t)} \right].$$

Substituting  $M_{t,t+1}$ ,  $P(t, n, s_t)$  and  $P(t+1, n-1, s_{t+1})$  using equations (3) and (4), rewriting  $s_{t+1}$  as  $\{s_{t+1}^c, s_{t+1}^\pi\}$ , applying embedded conditional expectation rule  $\mathbb{E}_t[\bullet] = \mathbb{E}_t[\mathbb{E}_t[\bullet | s_{t+1}]]$ , and using the fact that for a Normal random variable  $z$ ,  $\mathbb{E}[\exp z] = \exp(\mathbb{E}[z] + \frac{1}{2}\text{Var}[z])$ , we get

$$\sum_{i=1}^2 \sum_{j=1}^2 \phi_{s_i^c, i}^c \phi_{s_i^\pi, j}^\pi \exp \left( \begin{aligned} & \ln \beta_{i,j} + A_{n-1,i,j} - A_{n,s_i^c, s_i^\pi} + B_{n,s_i^c, s_i^\pi}^c c_t + B_{n,s_i^c, s_i^\pi}^\pi \pi_t \\ & - (B_{n-1,i,j}^c + \gamma) (a_i^c + b_i^c c_t) - (B_{n-1,i,j}^\pi + 1) (a_j^\pi + b_j^\pi \pi_t) \\ & + \frac{1}{2} (B_{n-1,i,j}^c + \gamma)^2 (\sigma_i^c)^2 + \frac{1}{2} (B_{n-1,i,j}^\pi + 1)^2 (\sigma_j^\pi)^2 \\ & + (B_{n-1,i,j}^c + \gamma) (B_{n-1,i,j}^\pi + 1) \rho_{i,j} \sigma_i^c \sigma_j^\pi \end{aligned} \right) \cong 1.$$



Because  $\exp(x) \cong 1 + x$  for  $x$  in the neighborhood of zero and since  $\sum_{i=1}^2 \sum_{j=1}^2 \phi_{s_t^c, i}^c \phi_{s_t^\pi, j}^\pi = 1$ ,

$$\begin{aligned} 0 &\cong -A_{n, s_t^c, s_t^\pi} + \sum_{i=1}^2 \sum_{j=1}^2 \phi_{s_t^c, i}^c \phi_{s_t^\pi, j}^\pi G_{n-1, i, j}^A \\ &+ \left( B_{n, s_t^c, s_t^\pi}^c - \sum_{i=1}^2 \sum_{j=1}^2 \phi_{s_t^c, i}^c \phi_{s_t^\pi, j}^\pi b_i^c (B_{n-1, i, j}^c + \gamma) \right) c_t \\ &+ \left( B_{n, s_t^c, s_t^\pi}^\pi - \sum_{i=1}^2 \sum_{j=1}^2 \phi_{s_t^c, i}^c \phi_{s_t^\pi, j}^\pi b_j^\pi (B_{n-1, i, j}^\pi + 1) \right) \pi_t \end{aligned}$$

where

$$\begin{aligned} G_{n-1, i, j}^A &= A_{n-1, i, j} + \ln \beta_{i, j} - a_i^c (B_{n-1, i, j}^c + \gamma) - a_j^\pi (B_{n-1, i, j}^\pi + 1) \\ &+ \frac{1}{2} (B_{n-1, i, j}^c + \gamma)^2 (\sigma_i^c)^2 + \frac{1}{2} (B_{n-1, i, j}^\pi + 1)^2 (\sigma_j^\pi)^2 \\ &+ (B_{n-1, i, j}^c + \gamma) (B_{n-1, i, j}^\pi + 1) \rho_{i, j} \sigma_i^c \sigma_j^\pi. \end{aligned}$$

Because this relation must be true for any  $c_t$  and  $\pi_t$ , we set the coefficients in front of  $c_t$  and  $\pi_t$  and the remaining term equal to zero to obtain:

$$\begin{aligned} A_{n, s_t^c, s_t^\pi} &= \sum_{i=1}^2 \sum_{j=1}^2 \phi_{s_t^c, i}^c \phi_{s_t^\pi, j}^\pi G_{n-1, i, j}^A, \\ B_{n, s_t^c, s_t^\pi}^c &= \sum_{i=1}^2 \sum_{j=1}^2 \phi_{s_t^c, i}^c \phi_{s_t^\pi, j}^\pi b_i^c (B_{n-1, i, j}^c + \gamma), \\ B_{n, s_t^c, s_t^\pi}^\pi &= \sum_{i=1}^2 \sum_{j=1}^2 \phi_{s_t^c, i}^c \phi_{s_t^\pi, j}^\pi b_j^\pi (B_{n-1, i, j}^\pi + 1). \end{aligned}$$

## C Risky zero-coupon bond price analytical approximation

In this section, we derive the functions  $A_{n, s_t}^v$ ,  $B_{n, s_t}^{v, c}$ , and  $B_{n, s_t}^{v, \pi}$  appearing in the analytical approximation formula of the zero-coupon risky bond price  $V(t, T, s_t)$ . Note that for the derivation in this appendix, for notational convenience, we drop the  $v$  superscript from the  $A$  and  $B$  functions. The derivations are based on our assumption of affine default probability in consumption growth and inflation and three approximations: (i) the time  $t$  value of the zero-coupon bond, given the actual states of consumption and inflation,  $\tilde{V}(t, T, s_t)$ , is well approximated by an exponential function, and (ii) the function  $\exp(x)$  may be replaced by its Taylor expansion around zero, truncated after the second term, that is,  $\exp(x) \cong 1 + x$ ; (iii)  $\exp(-L_{s_{t+1}} h_{t+1}) \simeq 1 - L_{s_{t+1}} h_{t+1}$ . Starting from equations (5) and (6) we obtain:

$$1 \cong \mathbf{E}_t \left[ \exp \left( \begin{array}{l} (\ln \beta_{s_{t+1}} - L_{s_{t+1}} \alpha_{s_{t+1}}) \\ - \left( \gamma + L_{s_{t+1}} \alpha_{s_{t+1}}^c \right) c_{t+1} \\ - \left( 1 + L_{s_{t+1}} \alpha_{s_{t+1}}^\pi \right) \pi_{t+1} \end{array} \right) \frac{V(t+1, n-1, s_{t+1})}{V(t, n, s_t)} \right].$$

Substituting  $V(t, n, s_t)$  and  $V(t+1, n-1, s_{t+1})$  using equation (7), we use the same solution techniques as in Appendix B to obtain

$$\begin{aligned} A_{n, s_t^c, s_t^\pi} &= \sum_{i=1}^2 \sum_{j=1}^2 \phi_{s_t^c, i}^c \phi_{s_t^\pi, j}^\pi G_{n-1, i, j}^A, \\ B_{n, s_t^c, s_t^\pi}^c &= \sum_{i=1}^2 \sum_{j=1}^2 \phi_{s_t^c, i}^c \phi_{s_t^\pi, j}^\pi b_i^c (L_{i, j} \alpha_{i, j}^c + B_{n-1, i, j}^c + \gamma), \\ B_{n, s_t^c, s_t^\pi}^\pi &= \sum_{i=1}^2 \sum_{j=1}^2 \phi_{s_t^c, i}^c \phi_{s_t^\pi, j}^\pi b_j^\pi (L_{i, j} \alpha_{i, j}^\pi + B_{n-1, i, j}^\pi + 1), \end{aligned}$$

with

$$\begin{aligned} G_{n-1, i, j}^A &= A_{n-1, i, j} + \ln \beta_{i, j} - L_{i, j} \alpha_{i, j} - a_i^c (L_{i, j} \alpha_{i, j}^c + B_{n-1, i, j}^c + \gamma) - a_j^\pi (L_{i, j} \alpha_{i, j}^\pi + B_{n-1, i, j}^\pi + 1) \\ &\quad + \frac{1}{2} (L_{i, j} \alpha_{i, j}^c + B_{n-1, i, j}^c + \gamma)^2 (\sigma_i^c)^2 + \frac{1}{2} (L_{i, j} \alpha_{i, j}^\pi + B_{n-1, i, j}^\pi + 1)^2 (\sigma_j^\pi)^2 \\ &\quad + (L_{i, j} \alpha_{i, j}^c + B_{n-1, i, j}^c + \gamma) (L_{i, j} \alpha_{i, j}^\pi + B_{n-1, i, j}^\pi + 1) \rho_{i, j} \sigma_i^c \sigma_j^\pi. \end{aligned}$$

## D Survival probability analytical approximation

We assume that  $\Pr_{\mathcal{G}_t} [\tau > t+n \mid \tau > t] \cong q(t, n, s_t)$  where

$$q(t, n, s_t) = \exp(-A_{n, s_t}^q - B_{n, s_t}^{q, c} c_t - B_{n, s_t}^{q, \pi} \pi_t).$$

The coefficients  $A_{n, s_t}^q$ ,  $B_{n, s_t}^{q, c}$  and  $B_{n, s_t}^{q, \pi}$  are obtained recursively starting with  $A_{0, s_T}^q = B_{0, s_T}^{q, c} = B_{0, s_T}^{q, \pi} = 0$ . Indeed, because

$$\begin{aligned} \Pr_{\mathcal{G}_t} [\tau > t+n \mid \tau > t] &\cong \mathbb{E}_t \left[ \exp(-h_{t+1}) \mathbb{E}_t \left[ \exp\left(-\sum_{u=t+2}^{t+n} h_u\right) \right] \right] \\ &\cong \mathbb{E}_t \left[ \exp(-h_{t+1}) \Pr_{\mathcal{G}_{t+1}} [\tau > t+n \mid \tau > t+1] \right] \end{aligned}$$

where  $\sum_{u=t+2}^{t+1} h_u$  is set to zero whenever it happens, then

$$\begin{aligned} 1 &\cong \mathbb{E}_t \left[ \exp(-h_{t+1}) \frac{\Pr_{\mathcal{G}_{t+1}} [\tau > t+n \mid \tau > t+1]}{\Pr_{\mathcal{G}_t} [\tau > t+n \mid \tau > t]} \right] \\ &\cong \mathbb{E}_t \left[ \exp(-h_{t+1}) \frac{q(t+1, n-1, s_{t+1})}{q(t, n, s_t)} \right] \\ &\cong \mathbb{E}_t \left[ \exp \left( \begin{array}{c} -\alpha_{s_{t+1}} - A_{n-1, s_{t+1}}^q + A_{n, s_t}^q \\ + B_{n, s_t}^{q, c} c_t - \left( \alpha_{s_{t+1}}^c + B_{n-1, s_{t+1}}^{q, c} \right) c_{t+1} \\ + B_{n, s_t}^{q, \pi} \pi_t - \left( \alpha_{s_{t+1}}^\pi + B_{n-1, s_{t+1}}^{q, \pi} \right) \pi_{t+1} \end{array} \right) \right] \end{aligned}$$

where the last line is obtained by replacing  $h_{t+1}$  by the approximation (6). Using the same solution technique as in Appendix B we get

$$\begin{aligned}
A_{n,s_t^c,s_t^\pi}^q &= \sum_{i=1}^2 \sum_{j=1}^2 \phi_{s_t^c,i}^c \phi_{s_t^\pi,j}^\pi G_{n-1,i,j}^A, \\
B_{n,s_t^c,s_t^\pi}^{q,c} &= \sum_{i=1}^2 \sum_{j=1}^2 \phi_{s_t^c,i}^c \phi_{s_t^\pi,j}^\pi b_i^c (\alpha_{i,j}^c + B_{n-1,i,j}^{q,c}), \\
B_{n,s_t^c,s_t^\pi}^{q,\pi} &= \sum_{i=1}^2 \sum_{j=1}^2 \phi_{s_t^c,i}^c \phi_{s_t^\pi,j}^\pi b_j^\pi (\alpha_{i,j}^\pi + B_{n-1,i,j}^{q,\pi}),
\end{aligned}$$

with

$$\begin{aligned}
G_{n-1,i,j}^A &= A_{n-1,i,j}^q + \alpha_{i,j} + a_i^c (\alpha_{i,j}^c + B_{n-1,i,j}^{q,c}) + a_j^\pi (\alpha_{i,j}^\pi + B_{n-1,i,j}^{q,\pi}) \\
&\quad - \frac{1}{2} (\alpha_{i,j}^c + B_{n-1,i,j}^{q,c})^2 (\sigma_i^c)^2 - \frac{1}{2} (\alpha_{i,j}^\pi + B_{n-1,i,j}^{q,\pi})^2 (\sigma_j^\pi)^2 \\
&\quad - (\alpha_{i,j}^c + B_{n-1,i,j}^{q,c}) (\alpha_{i,j}^\pi + B_{n-1,i,j}^{q,\pi}) \rho_{i,j} \sigma_i^c \sigma_j^\pi.
\end{aligned}$$

## E Log-likelihood function of the Markov-switching model

The terms of the log likelihood function are computed as follows. Let the conditional likelihood be rewritten using Bayes rule as:

$$\begin{aligned}
f(x_t | v_{t-1}; \theta, \phi) &= \frac{f(x_t, v_{t-1}; \theta, \phi)}{f(v_{t-1}; \theta, \phi)} \\
&= \frac{\sum_{s_t} f(x_t, s_t, v_{t-1}; \theta, \phi)}{f(v_{t-1}; \theta, \phi)} \\
&= \sum_{s_t} f(x_t | s_t, v_{t-1}; \theta) \times f(s_t | v_{t-1}; \theta, \phi) \\
&= \eta_t' \times \xi_{t|t-1}.
\end{aligned}$$

where the sum over  $s_t$  is performed for values of  $s_t \in \{(1, 1), (1, 2), (2, 1), (2, 2)\}$  and

$$\eta_t = \begin{pmatrix} f(x_t | (1, 1), v_{t-1}; \theta) \\ f(x_t | (1, 2), v_{t-1}; \theta) \\ f(x_t | (2, 1), v_{t-1}; \theta) \\ f(x_t | (2, 2), v_{t-1}; \theta) \end{pmatrix} \quad \text{and} \quad \xi_{t|t-1} = \begin{pmatrix} f((1, 1) | v_{t-1}; \theta, \phi) \\ f((1, 2) | v_{t-1}; \theta, \phi) \\ f((2, 1) | v_{t-1}; \theta, \phi) \\ f((2, 2) | v_{t-1}; \theta, \phi) \end{pmatrix}.$$

The components of  $\eta_t$  are computed analytically using the bivariate Normal density function. Indeed, from the Markov-switching model, the likelihood function of  $x_t = (c_t, \pi_t)$  given  $x_{t-1} = (c_{t-1}, \pi_{t-1})$  and the actual states of consumption and inflation  $s_t = (s_t^c, s_t^\pi)$  is

$$f(x_t | s_t, v_{t-1}; \theta) = \frac{1}{2\pi} \frac{\exp\left(-\frac{1}{2} (z_t^c)^2 - \frac{1}{2} (z_t^\pi)^2 + \rho_{s_t^c, s_t^\pi} z_t^c z_t^\pi\right)}{\sigma_{s_t^c}^c \sigma_{s_t^\pi}^\pi \sqrt{1 - \rho_{s_t^c, s_t^\pi}^2}}$$

with

$$z_t^c = \frac{c_t - a_{s_t^c}^c - b_{s_t^c}^c c_{t-1}}{\sigma_{s_t^c}^c \sqrt{1 - \rho_{s_t^c, s_t^\pi}^2}}$$

and

$$z_t^\pi = \frac{\pi_t - a_{s_t^\pi}^\pi - b_{s_t^\pi}^\pi \pi_{t-1}}{\sigma_{s_t^\pi}^\pi \sqrt{1 - \rho_{s_t^c, s_t^\pi}^2}}.$$

The vectors  $\xi_{2|1}, \dots, \xi_{T|T-1}$  are obtained recursively using

$$\xi_{t+1|t} = \Phi' \xi_{t|t} \text{ with } \xi_{t|t} = \frac{\eta_t(\times) \xi_{t|t-1}}{\eta_t' \xi_{t|t-1}}$$

where  $(\times)$  denotes element-by-element multiplication and  $\Phi$  is the transition matrix

$$\Phi = \begin{pmatrix} \phi_{1,1}^c \phi_{1,1}^\pi & \phi_{1,1}^c \phi_{1,2}^\pi & \phi_{1,2}^c \phi_{1,1}^\pi & \phi_{1,2}^c \phi_{1,2}^\pi \\ \phi_{1,1}^c \phi_{2,1}^\pi & \phi_{1,1}^c \phi_{2,2}^\pi & \phi_{1,2}^c \phi_{2,1}^\pi & \phi_{1,2}^c \phi_{2,2}^\pi \\ \phi_{2,1}^c \phi_{1,1}^\pi & \phi_{2,1}^c \phi_{1,2}^\pi & \phi_{2,2}^c \phi_{1,1}^\pi & \phi_{2,2}^c \phi_{1,2}^\pi \\ \phi_{2,1}^c \phi_{2,1}^\pi & \phi_{2,1}^c \phi_{2,2}^\pi & \phi_{2,2}^c \phi_{2,1}^\pi & \phi_{2,2}^c \phi_{2,2}^\pi \end{pmatrix}.$$

To initialize the recursion, we let  $\eta_1 = (1, 1, 1, 1)'$  and  $\xi_{1|0}$  is set to the stationary distribution of the Markov chain associated with  $\Phi$ . Using the independence between the evolution of the state of consumption and the state of inflation, the stationary distribution is obtained as the product of the stationary distribution of  $s^c$  and  $s^\pi$ :

$$\xi_{1|0} = \begin{pmatrix} \frac{1 - \phi_{2,2}^c}{1 - \phi_{1,1}^c + 1 - \phi_{2,2}^c} \times \frac{1 - \phi_{2,2}^\pi}{1 - \phi_{1,1}^\pi + 1 - \phi_{2,2}^\pi} \\ \frac{1 - \phi_{2,2}^c}{1 - \phi_{1,1}^c + 1 - \phi_{2,2}^c} \times \frac{1 - \phi_{1,1}^\pi}{1 - \phi_{1,1}^\pi + 1 - \phi_{2,2}^\pi} \\ \frac{1 - \phi_{1,1}^c}{1 - \phi_{1,1}^c + 1 - \phi_{2,2}^c} \times \frac{1 - \phi_{2,2}^\pi}{1 - \phi_{1,1}^\pi + 1 - \phi_{2,2}^\pi} \\ \frac{1 - \phi_{1,1}^c}{1 - \phi_{1,1}^c + 1 - \phi_{2,2}^c} \times \frac{1 - \phi_{1,1}^\pi}{1 - \phi_{1,1}^\pi + 1 - \phi_{2,2}^\pi} \end{pmatrix}.$$

Table 1: Average treasury spot rates and corporate spreads 1987-2008

Maturity (years)	Treasuries (%)	Aa spreads (%)	A spreads (%)	Baa spreads (%)
1	4.832	0.627	0.777	1.305
2	5.088	0.527	0.755	1.241
3	5.291	0.583	0.842	1.321
4	5.468	0.640	0.911	1.385
5	5.626	0.674	0.949	1.420
6	5.769	0.688	0.963	1.432
7	5.897	0.690	0.961	1.429
8	6.011	0.684	0.949	1.416
9	6.113	0.674	0.933	1.397
10	6.201	0.663	0.914	1.376

This table reports the average treasury yields and corporate yield spreads of industrial Aa, A and Baa zero-coupon bonds for maturities from one to ten years. The treasury spot rates are taken from Gurkaynak et al. (2007). For the 1987-1996 period, the corporate spot rates are extracted from samples of coupon bond prices taken from Warga (1998) and computed with the Nelson-Siegel (1987) approach. The corporate spot rates for the 1997-2008 period are taken directly from Bloomberg. Corporate yield spreads are calculated as the difference between the corporate spot rates and treasury spot rates for a given maturity.

Table 2: Parameter estimates for the Markov-switching model

	$a_1^c$	$a_2^c$	$b_1^c$	$b_2^c$	$\sigma_1^c$	$\sigma_2^c$
Point estimate	<b>0.00377</b>	0.00068	<b>0.38479</b>	0.09514	<b>0.00349</b>	<b>0.00549</b>
Standard deviation	0.00057	0.00123	0.07820	0.18919	0.00022	0.00071
p-value	0.00 %	58.02 %	0.00 %	61.51 %	0.00 %	0.00 %
	$a_1^\pi$	$a_2^\pi$	$b_1^\pi$	$b_2^\pi$	$\sigma_1^\pi$	$\sigma_2^\pi$
Point estimate	<b>0.00246</b>	<b>0.00366</b>	<b>0.63932</b>	<b>0.71340</b>	<b>0.00235</b>	<b>0.00524</b>
Standard deviation	0.00065	0.00121	0.08783	0.07608	0.00025	0.00045
p-value	0.01 %	0.26 %	0.00 %	0.00 %	0.00 %	0.00 %
	$\rho_{1,1}$	$\rho_{1,2}$	$\rho_{2,1}$	$\rho_{2,2}$		
Point estimate	0.15218	<b>-0.50253</b>	-0.44210	<b>0.02355</b>		
Standard deviation	0.10896	0.12014	0.28546	0.00000		
p-value	16.25 %	0.00 %	12.14 %	84.69 %		
	$\phi_{1,1}^c$	$\phi_{2,2}^c$	$\phi_{1,1}^\pi$	$\phi_{2,2}^\pi$		
Point estimate	<b>0.96464</b>	<b>0.86163</b>	<b>0.96691</b>	<b>0.96201</b>		
Standard deviation	0.01698	0.07908	0.01914	0.02845		
p-value	0.00 %	0.00 %	0.00 %	0.00 %		

This table reports the point estimates and estimated standard deviations for the parameters of the Markov-switching model obtained by maximizing the likelihood function given by equation (13). The Markov-switching model is:  $c_t = a_{s_t^c}^c + b_{s_t^c}^c c_{t-1} + e_t^c$  and  $\pi_t = a_{s_t^\pi}^\pi + b_{s_t^\pi}^\pi \pi_{t-1} + e_t^\pi$  with  $\phi_{ij}^c = \Pr(s_t^c = i | s_{t-1}^c = j)$  and  $\phi_{ij}^\pi = \Pr(s_t^\pi = i | s_{t-1}^\pi = j)$  and  $\rho_{ij}$  the correlation between  $e_t^c$  and  $e_t^\pi$  in state  $i, j$ . The last line of each panel reports the p-value associated with the test of a zero parameter value. These estimates have been obtained with the growth rate of non-durable and services personal consumption expenditures per capita (real) from the first quarter of 1957 to the last quarter of 2008 and the growth rate of non-durable and services consumption price index for the same period. Parameters in bold are significant at the 1% level.

Table 3: Fit of the risk-free zero-coupon bond pricing model: constant preference parameters

Maturity ( $n/4$ )	1	3	5	8	10
<i>rmse</i> (%)	1.938	1.838	1.734	1.641	1.618
<i>aae</i> (%)	1.533	1.520	1.455	1.397	1.368
<i>ae</i> (%)	0.450	0.242	0.015	-0.284	-0.439
<i>avg fitted</i> (%)	5.281	5.534	5.641	5.727	5.763
<i>avg obs.</i> (%)	4.832	5.291	5.626	6.011	6.201

*rmse* is the root-mean-squared error for a given maturity computed for 1987:I to 2008:IV by minimizing the objective function given by equation (15) which is computed with the differences between our fitted theoretical risk-free yields and the estimated risk-free yields to maturity taken from Gurkaynac et al. (2007). *aae* is the absolute average error while *ae* is the average error. *avg obs.* and *avg fitted* are, respectively, the average yield from Gurkaynac et al. (2007) and average fitted theoretical yield for a given maturity.

Table 4: Fit of the risk-free zero-coupon bond pricing model: time varying preference parameters

Maturity ( $n/4$ )	1	3	5	8	10
<i>rmse</i> (%)	0.833	0.610	0.395	0.224	0.284
<i>aae</i> (%)	0.441	0.300	0.182	0.109	0.176
<i>ae</i> (%)	0.317	0.286	0.172	-0.023	-0.133
<i>avg fitted</i> (%)	5.148	5.577	5.798	5.988	6.069
<i>avg obs.</i> (%)	4.832	5.291	5.626	6.011	6.201

*rmse* is the root-mean-squared error for a given maturity computed for 1987:I to 2008:IV by minimizing the objective function given by equation (16) which is computed with the differences between our fitted theoretical risk-free yields and the estimated risk-free yields to maturity taken from Gurkaynac et al. (2007). *aae* is the absolute average error while *ae* is the average error. *avg obs.* and *avg fitted* are, respectively, the average yield from Gurkaynac et al. (2007) and average fitted theoretical yield for a given maturity.

Table 5: Parameter estimates for the conditional default probabilities

	$s_t = (1, 1)$	$s_t = (1, 2)$	$s_t = (2, 1)$	$s_t = (2, 2)$
	Aa			
$\alpha_{i,j}$	0.000055	0.000171	0.000420	0.001126
$\alpha_{i,j}^c$	-0.001906	0.009432	-0.009109	-0.028082
$\alpha_{i,j}^\pi$	0.004704	-0.005518	0.024932	-0.067682
	A			
$\alpha_{i,j}$	0.001038	0.000991	0.000181	0.002705
$\alpha_{i,j}^c$	0.001018	0.019711	0.005935	-0.067490
$\alpha_{i,j}^\pi$	-0.063422	-0.056948	-0.006430	-0.162663
	Baa			
$\alpha_{i,j}$	0.001195	0.001150	0.000044	0.011359
$\alpha_{i,j}^c$	0.137513	0.004280	-0.006709	-0.513363
$\alpha_{i,j}^\pi$	-0.001813	0.079485	0.005585	-0.522254

The table reports the parameter estimates for the conditional default probability function  $h_t = \alpha_{s_t} + \alpha_{s_t}^c c_t + \alpha_{s_t}^\pi \pi_t$  obtained by minimizing the objective function given by equation (17) which is computed with the differences between our model generated theoretical term structures of survival probabilities and the empirical survival probabilities obtained from Moody's rating transition matrices over 1987:I to 2008:IV.

Table 6: Correlations of the estimated default probability with consumption growth and inflation.

	All	$s_t = (1, 1)$	$s_t = (1, 2)$	$s_t = (2, 1)$	$s_t = (2, 2)$
<i>nobs</i>	88	54	20	3	11
Corr $c_t$ and $\pi_t$	-0.0189	0.0838	-0.3933	-0.9989	0.0758
			Aa		
Corr $h_t$ and $c_t$	-0.5154	-0.2697	0.3432	-0.9952	-0.3951
Corr $h_t$ and $\pi_t$	-0.5087	0.1654	-0.7313	0.9896	-0.9276
			A		
Corr $h_t$ and $c_t$	-0.3227	0.0348	0.4338	0.4989	-0.2754
Corr $h_t$ and $\pi_t$	-0.7788	-0.9457	-0.9854	-0.5384	-0.9668
			Baa		
Corr $h_t$ and $c_t$	-0.4706	0.7877	0.1469	-0.2985	-0.4474
Corr $h_t$ and $\pi_t$	-0.4508	0.0390	0.7392	0.2540	-0.8905

The table reports the correlation between the estimated conditional default probability  $h_t$  (computed using equation (6)) with consumption growth and inflation. Column All report results for the full sample i.e. 1987:I to 2008:IV. Columns  $s_t = (1, 1)$ ,  $s_t = (1, 2)$ ,  $s_t = (2, 1)$  and  $s_t = (2, 2)$  report the statistics computed over the sample periods for which the given state is prevailing. *nobs* is the number of observations.



Table 7: Statistics on estimated default spread: constant preference parameters

	Aa			A			Baa							
	All	(1,1)	(1,2)	All	(1,1)	(1,2)	All	(1,1)	(1,2)	All	(1,1)	(1,2)	(2,1)	(2,2)
<i>Nobs.</i>	88	54	20	88	54	20	88	54	20	88	54	20	3	11
Average $YS_t$ (%)	0.66	0.57	0.69	0.91	0.83	0.82	0.91	0.83	0.82	1.38	1.28	1.19	1.38	2.18
Average $DS_t$ (%)	0.04	0.04	0.04	0.11	0.11	0.11	0.11	0.11	0.11	0.46	0.44	0.49	0.44	0.55
Average $DS_t$ prop. (%)	8	9	6	14	16	13	14	16	12	37	38	43	32	28
Stdv. $YS_t$ (%)	0.31	0.28	0.17	0.41	0.34	0.13	0.41	0.34	0.02	0.54	0.43	0.23	0.05	0.80
Stdv. $DS_t$ (%)	0.00	0.00	0.00	0.01	0.00	0.00	0.01	0.00	0.00	0.04	0.00	0.01	0.02	0.05
corr. $DS_t$ and $YS_t$	0.49	-0.04	0.49	0.41	-0.06	-0.12	0.41	-0.06	0.78	0.53	0.00	0.51	-0.02	0.64
corr. $DS_t$ and $c_t$	-0.55	0.03	0.23	-0.11	-0.07	0.54	-0.11	-0.07	1.00	-0.48	0.28	-0.28	0.98	-0.14
corr. $DS_t$ and $\pi_t$	-0.30	0.19	-0.63	-0.92	-0.90	-0.96	-0.92	-0.90	-0.99	-0.04	0.11	-0.05	-0.99	-0.93
corr. $\Delta YS_t$ and $\Delta y_{g,t}$	-0.11	-0.17	0.11	-0.18	-0.24	0.61	-0.18	-0.24	-0.41	-0.26	-0.43	0.49	-0.13	-0.83
corr. $\Delta DS_t$ and $\Delta y_{g,t}$	0.13	0.10	-0.16	0.04	-0.11	-0.08	0.04	-0.11	-0.73	0.08	-0.09	-0.36	-0.56	0.44
Average $DR_t$ (%)	0.04	0.04	0.04	0.11	0.11	0.11	0.11	0.11	0.11	0.46	0.44	0.49	0.44	0.55
Average $DR_t$ prop. (%)	8	9	6	14	16	14	14	16	12	37	38	43	32	28
Average $DP_t$ (%)	0.00	0.00	0.00	0.00	0.00	0.00	0.00	0.00	0.00	0.00	0.00	0.00	0.00	0.00
Average $DP_t$ prop. (%)	0	0	0	0	0	0	0	0	0	0	0	0	0	0

*Nobs* is the number of observations;  $YS_t$  is the yield spread computed as the difference between the industrial corporate and treasury zero-coupon yields.  $DS_t$ ,  $DR_t$  and  $DP_t$  represent, respectively, the default spread, the default risk and the default premia computed with equations (8), (10) and (11) and the calibrated parameters;  $DR_t prop$  and  $DP_t prop$  are, respectively,  $DR_t/Y S_t$  and  $DP_t/Y S_t$ ; *Stdv* are standard deviations and *corr* are correlations;  $\Delta YS_t$ ,  $\Delta DS_t$  and  $\Delta y_{g,t}$  are the first differences in the yield spread, default spread and risk-free zero-coupon yield. Columns All report results for the full sample i.e. 1987:I to 2008:IV. Columns (1,1), (1,2), (2,1) and (2,2) report the statistics computed over the sample periods for which the given state ( $i, j$ ) is prevailing.

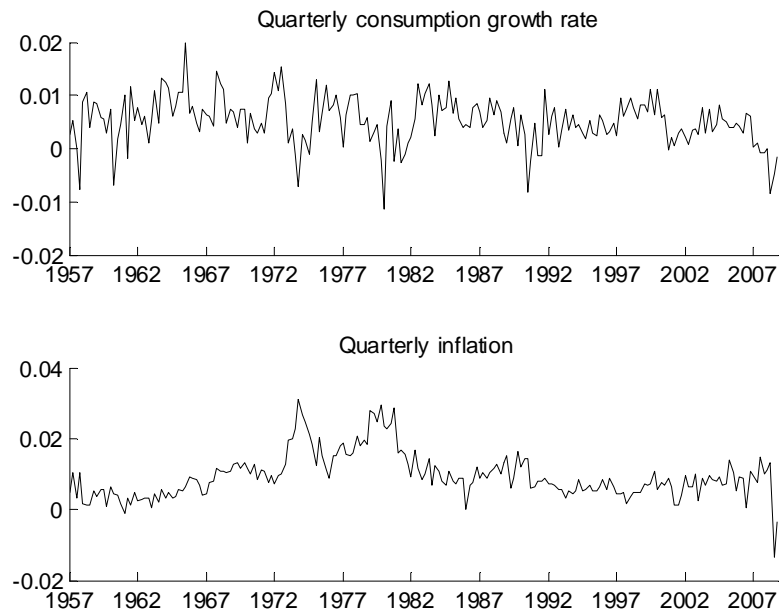
Table 8: Statistics on estimated default spread: time varying preference parameters

	Aa			A			Baa			
	All	(1,1)	(1,2)	(2,1)	(2,2)	All	(1,1)	(1,2)	(2,1)	(2,2)
		(1,1)	(1,2)	(2,1)	(2,2)	All	(1,1)	(1,2)	(2,1)	(2,2)
<i>Nobs.</i>	88	54	20	3	11	88	54	20	3	11
Average $YS_t$ (%)	0.66	0.57	0.69	0.55	1.10	0.91	0.83	0.82	0.88	1.51
Average $DS_t$ (%)	0.04	0.04	0.04	0.05	0.05	0.11	0.12	0.11	0.11	0.12
Average $DS_t$ prop. (%)	8	9	6	9	5	14	16	14	13	9
Stdv. $YS_t$ (%)	0.31	0.28	0.17	0.07	0.32	0.41	0.34	0.13	0.02	0.61
Stdv. $DS_t$ (%)	0.00	0.00	0.00	0.00	0.01	0.01	0.00	0.00	0.00	0.01
corr. $DS_t$ and $YS_t$	0.54	0.07	0.44	-0.24	0.74	0.43	-0.09	-0.04	0.79	0.76
corr. $DS_t$ and $c_t$	-0.57	-0.04	0.28	0.35	-0.27	-0.13	-0.05	0.52	0.99	-0.12
corr. $DS_t$ and $\pi_t$	-0.31	0.26	-0.70	-0.35	-0.96	-0.92	-0.96	-0.98	-0.99	-0.99
corr. $\Delta YS_t$ and $\Delta y_{g,t}$	-0.11	-0.17	0.11	-0.71	-0.08	-0.18	-0.24	0.61	-0.41	-0.63
corr. $\Delta DS_t$ and $\Delta y_{g,t}$	0.13	0.13	-0.18	1.00	0.45	0.03	-0.12	-0.10	-0.73	0.33
Average $DR_t$ (%)	0.04	0.04	0.04	0.05	0.05	0.11	0.12	0.11	0.11	0.12
Average $DR_t$ prop. (%)	8	9	6	9	5	14	16	14	13	9
Average $DP_t$ (%)	0.00	0.00	0.00	0.00	0.00	0.00	0.00	0.00	0.00	0.00
Average $DP_t$ prop. (%)	0	0	0	0	0	0	0	0	0	0

*Nobs* is the number of observations;  $YS_t$  is the yield spread computed as the difference between the industrial corporate and treasury zero-coupon yields.  $DS_t$ ,  $DR_t$  and  $DP_t$  represent, respectively, the default spread, the default risk and the default premia computed with equations (8), (10) and (11) and the calibrated parameters;  $DR_t$  prop and  $DP_t$  prop are, respectively,  $DR_t/Y S_t$  and  $DP_t/Y S_t$ ; *Stdv* are standard deviations and *corr* are correlations;  $\Delta YS_t$ ,  $\Delta DS_t$  and  $\Delta y_{g,t}$  are the first differences in the yield spread, default spread and risk-free zero-coupon yield. Columns All report results for the full sample i.e. 1987:I to 2008:IV. Columns (1,1), (1,2), (2,1) and (2,2) report the statistics computed over the sample periods for which the given state ( $i, j$ ) is prevailing.

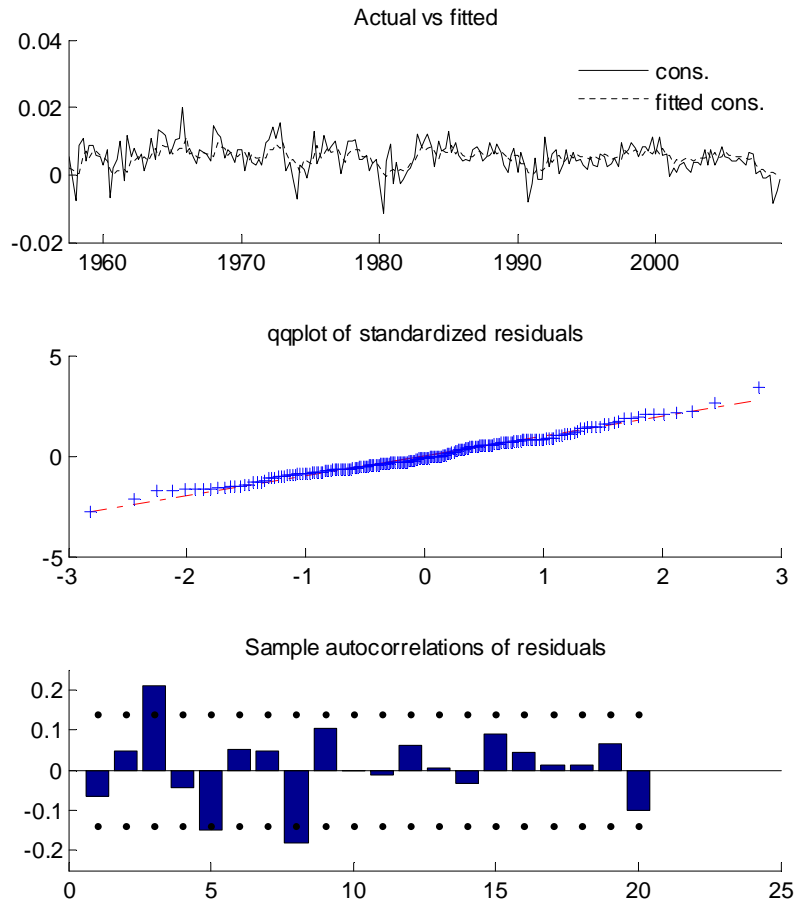


Figure 1: Non-durable and services consumption growth and inflation



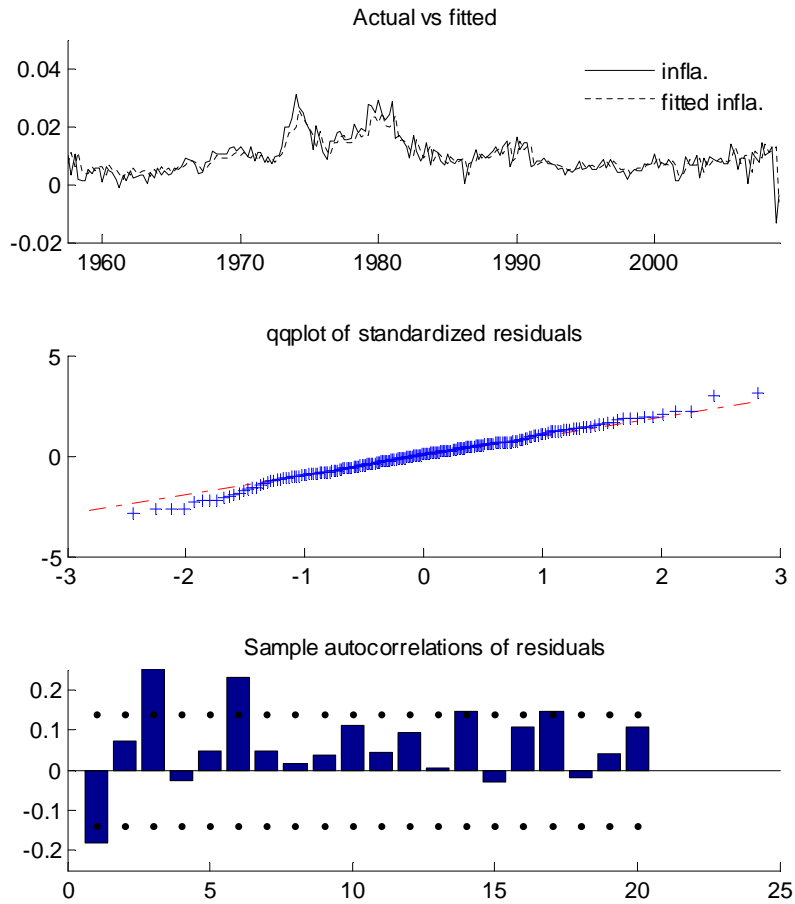
This figure plots the data series of the observed bond pricing factors used for the estimation of the Markov-switching parameters. The data series used here are the growth rate of non-durable and services real consumption expenditures per capita ( $c_t$ ) from 1957-I to the last quarter of 2008-IV and the growth rate of the consumption price index ( $\pi_t$ ) for the same period. Source: U.S. Department of Commerce, Bureau of Economic Analysis.

Figure 2: Fitted values and residuals analysis for consumption growth



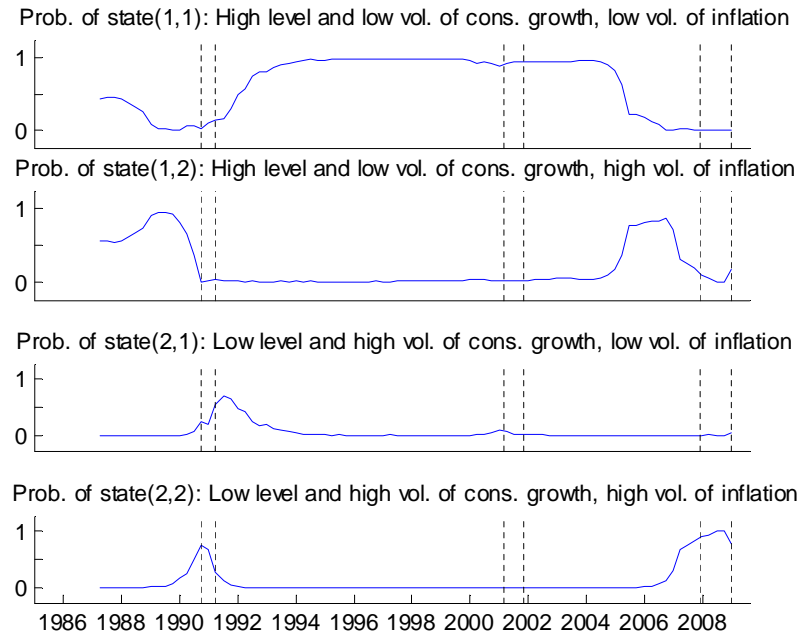
The top graph plots the actual and expected consumption growth obtained from the estimated Markov-switching model. The second graph shows the qqplot of the expected standardized residuals. The third graph shows the sample autocorrelation coefficients computed with the expected standardized residuals. All expected values are computed with the smoothed probability estimates.

Figure 3: Fitted values and residuals analysis for inflation



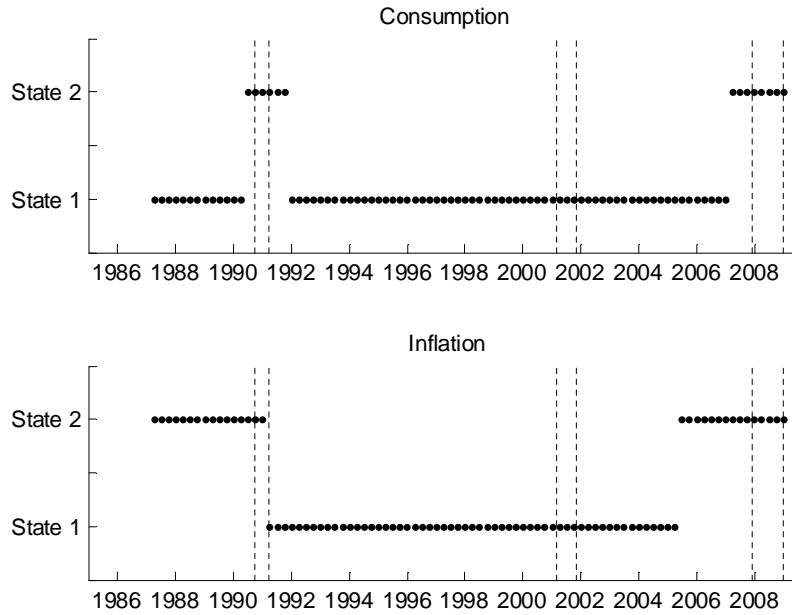
The top graph plots the actual and expected inflation obtained from the estimated Markov-switching model. The second graph shows the qqplot of the expected standardized residuals. The third graph shows the sample autocorrelation coefficients computed with the expected standardized residuals. All expected values are computed with the smoothed probability estimates.

Figure 4: Smoothed probabilities estimates



This figure plots the estimated smoothed probabilities  $\hat{\xi}_{t|T}$  of being in state  $s_t = (i, j)$  for the 1987-I- to 2008-IV period corresponding to the sample period of our corporate bond prices. These probabilities are computed with equation (14). Vertical lines indicate the official NBER recessions within our sample period. State (1,1): high level and low volatility of consumption growth with low volatility of inflation; State (1,2): high level and low volatility of consumption growth with high volatility of inflation; State (2,1): low level and high volatility of consumption growth with low volatility of inflation; State (2,2): low level and high volatility of consumption growth with high volatility of inflation.

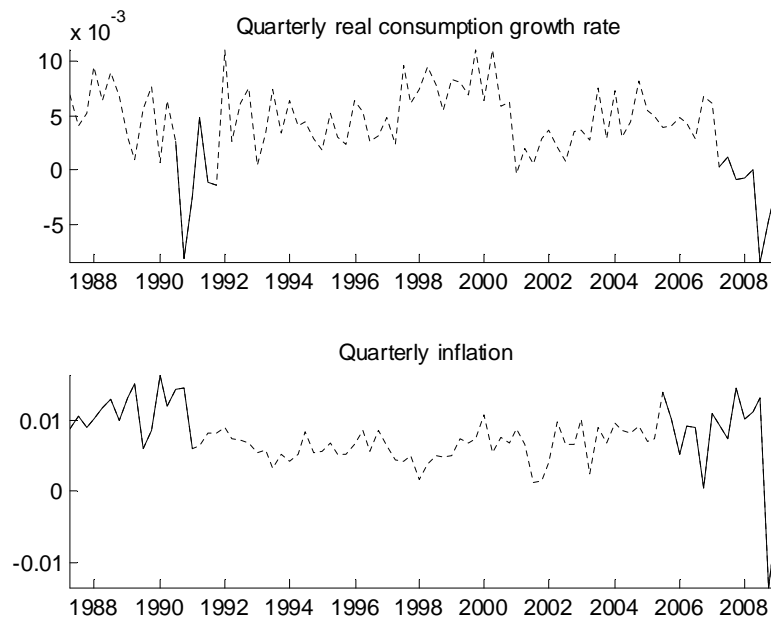
Figure 5: Estimated states for consumption growth and inflation



This figure plots the estimated state  $\hat{s}_t = (i, j)$  for the 1987-I- to 2008-IV period corresponding to the sample period of our corporate bond prices. The estimated state  $\hat{s}_t$  at time  $t$  is the one for which the estimated probability in vector  $\xi_{t|T}$  (computed with equation (14)) is the highest among all the possible states. Vertical lines indicate the official recessions within our sample period. State (1,1): high level and low volatility of consumption growth with low volatility of inflation; State (1,2): high level and low volatility of consumption growth with high volatility of inflation; State (2,1): low level and high volatility of consumption growth with low volatility of inflation; State (2,2): low level and high volatility of consumption growth with high volatility of inflation.

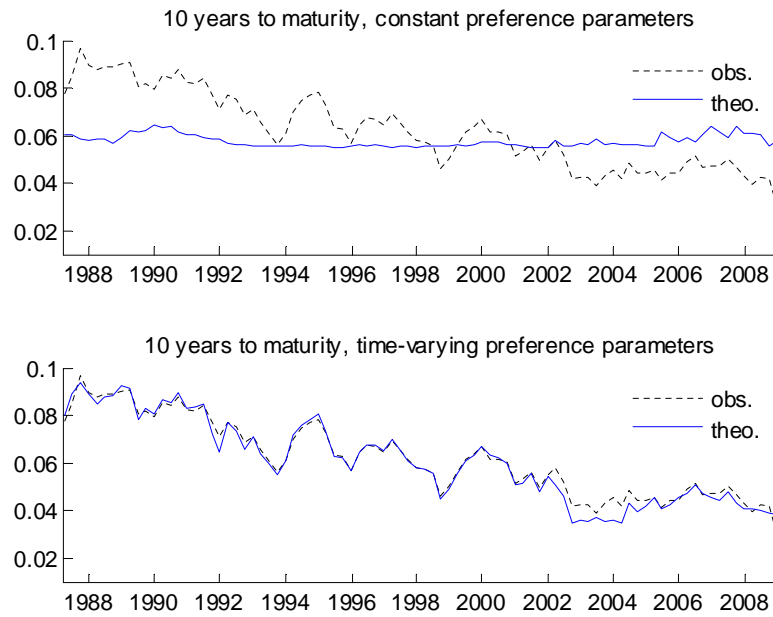


Figure 6: Consumption growth and inflation - 1987:I to 2008:IV



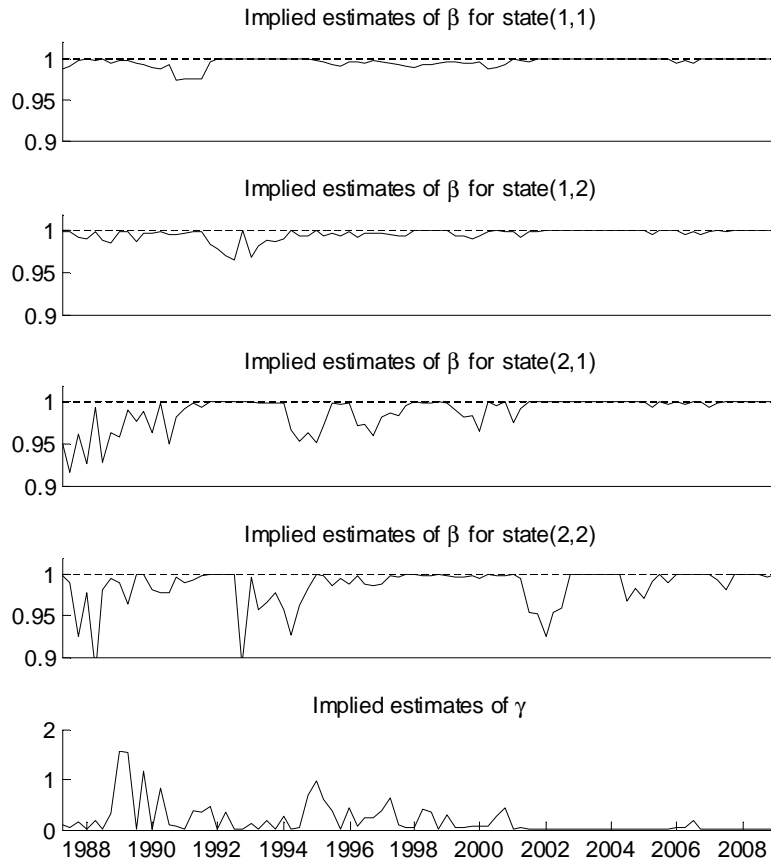
This figure plots the data series of our observed bond pricing factors for the 1987-I- to 2008-IV period corresponding to the sample period of our corporate bond prices. For consumption, the dashed line indicates the periods for which state 1 prevails (high level, low volatility). For inflation, the dashed line indicates state 1 (low volatility.)

Figure 7: Fitted and observed risk-free yields to maturity



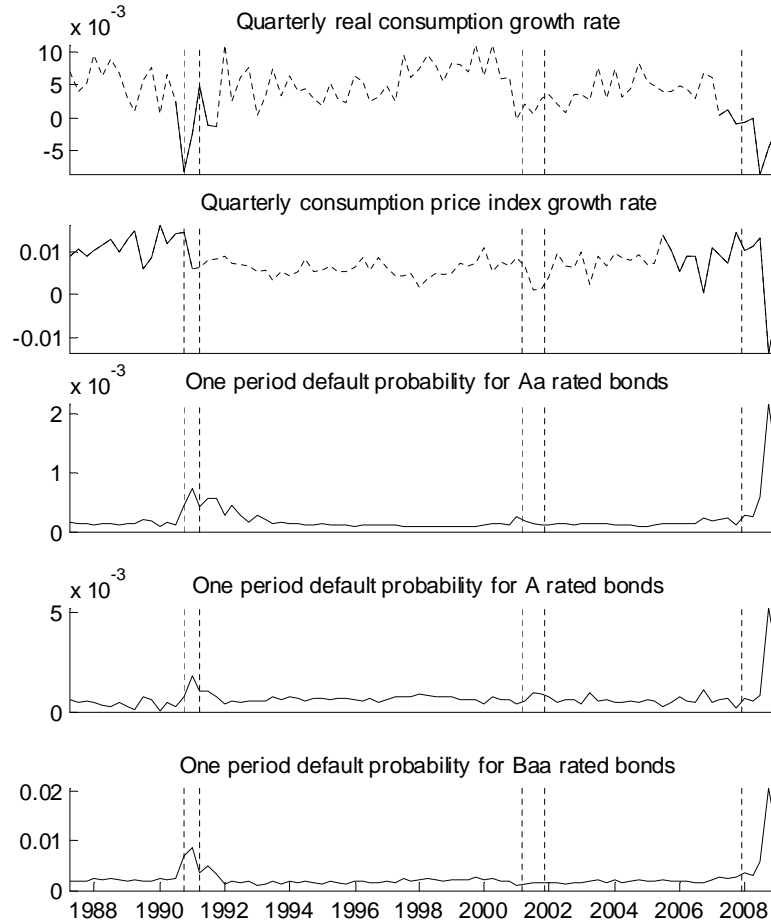
This figure plots the fitted and observed risk-free yield to maturity for the 10 year case. The fitted yields in the top graph are obtained with the common set of parameters (risk aversion and time preference) minimizing the objective function given by equation (15) which is computed with the differences between our fitted theoretical risk-free yield and the estimated risk-free yield to maturity taken from Gurkaynac et al. (2007). The fitted yields in the bottom graph are obtained with the time varying parameters obtained by minimizing, each quarter, the objective function given by equation (16).

Figure 8: Implied estimates of preference parameters



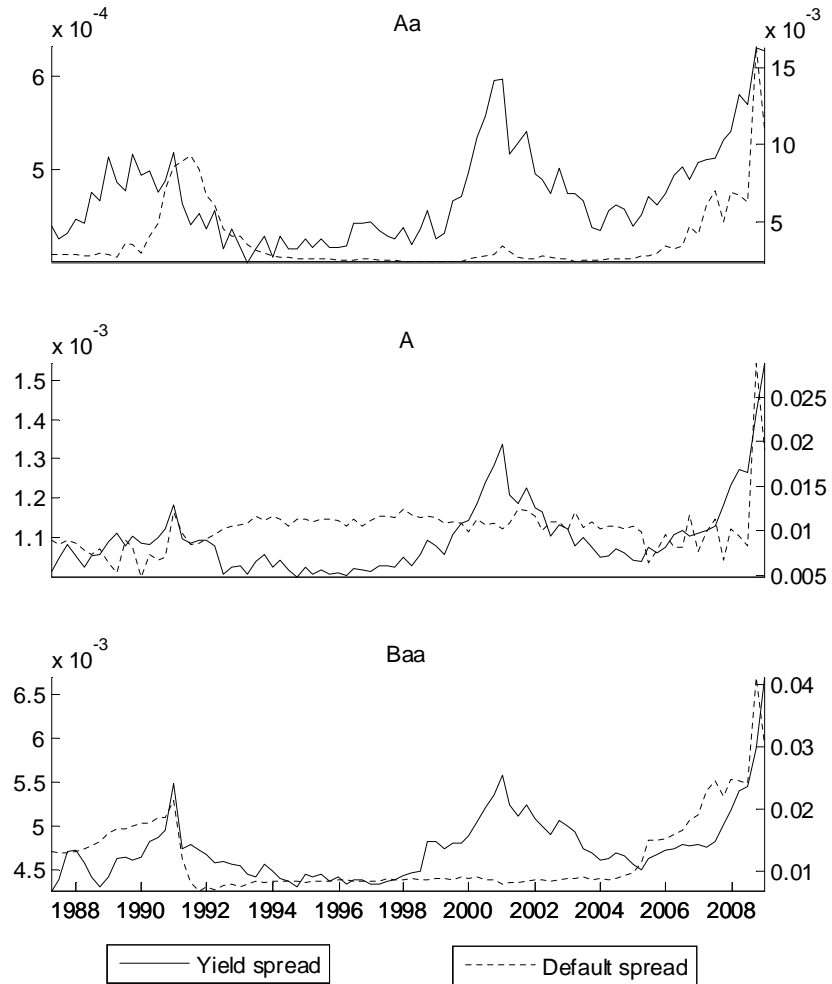
This figure plots the implied estimates for the preference parameters obtained by minimizing the objective function given by equation (16) at each quarter. State (1,1): high level and low volatility of consumption growth with low volatility of inflation; State (1,2): high level and low volatility of consumption growth with high volatility of inflation; State (2,1): low level and high volatility of consumption growth with low volatility of inflation; State (2,2): low level and high volatility of consumption growth with high volatility of inflation.

Figure 9: One period default probability with consumption growth and inflation



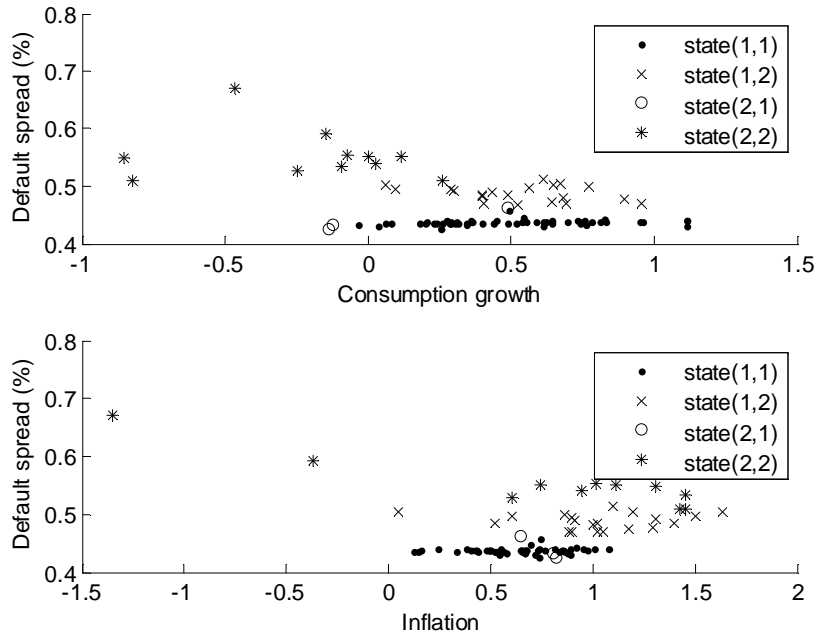
This figure plots the estimated one period conditional default probability function  $h_t = \alpha_{s_t} + \alpha_{s_t}^c c_t + \alpha_{s_t}^\pi \pi_t$  along with consumption growth and inflation. For consumption, the dashed line indicates the periods for which state 1 prevails (high level, low volatility). For inflation, the dashed line indicates state 1 (low volatility.) The conditional default probability jumps occur during states of low level and high volatility of consumption and high volatility of inflation. These periods are within 2 of the 3 economic recessions identified by the NBER during the sample period.

Figure 10: Corporate yield spreads and estimated default spreads



This figure shows on two scale graphs the evolution of the yield spread (right scale) with the estimated default spread (left scale) for ten years to maturity zero-coupon bonds and computed with equation (8).

Figure 11: Baa default spreads with consumption growth and inflation



This figure shows for the different estimated states of the Markov-switching model, the links between the computed Baa default spreads (computed with equation (8)) with consumption growth and inflation.